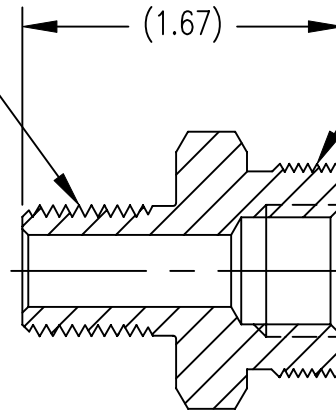


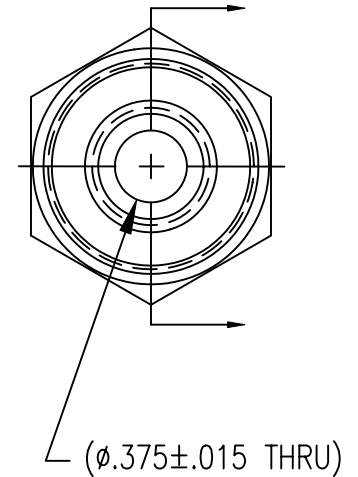
3/8 MALE NGT CONNECTION
AS PER CGA V-1



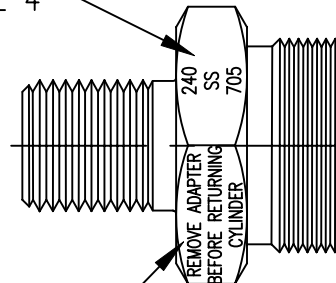
NUMBER 705 VALVE OUTLET
AS PER CGA V-1

UNCONTROLLED
For Reference Only

MB 11/3/2011



SEE NOTE 4



SEE NOTE 3

NOTES:

1. DIMENSIONS ARE IN INCHES.
2. BURRS REMOVED.
3. CENTERED ON TWO OPPOSITE HEX FLATS
MARKED IN .070" HIGH LETTERS:
"REMOVE ADAPTER
BEFORE RETURNING
CYLINDER"
4. ON ANY ONE REMAINING HEX FLAT
MARKED IN .070" HIGH LETTERS:
"240
SS
705"
AS SHOWN. MARKING MUST BE PERMANENT.
5. CLEANED AND PACKAGED FOR OXYGEN SERVICE.
6. SINGLE POLY BAGGED. BAG LABELED WITH GFP LOGO,
PART NUMBER, "CLEANED FOR OXYGEN SERVICE"
AND "MADE IN THE USA".

A	REVISED AND REDRAWN, MAKE FROM ONE PIECE OF HEX-1.25-SS6 x 1.78" L	10/11/11
REV	DESCRIPTION	DATE

THIS DOCUMENT CONTAINS INFORMATION THAT IS THE PROPRIETARY AND CONFIDENTIAL PROPERTY OF GASFLO PRODUCTS INC. AND MAY BE USED ONLY FOR AUTHORIZED PURPOSES. THIS DOCUMENT MAY NOT BE REPRODUCED WITHOUT GASFLO PRODUCTS INC. PRIOR WRITTEN CONSENT.

MAT'L: 1 /14" HEX 316L SST

DWN: FAS

SCALE: 1:1

SHEET: 1 of 1

DATE: 5/13/10

GasFlo Products Inc. Fairfield, N.J.	
SALES DWG.- ADAPTER CGA 240M x 705M, SS	
DWG: SALES-AD-240M705M-SS	REV.A