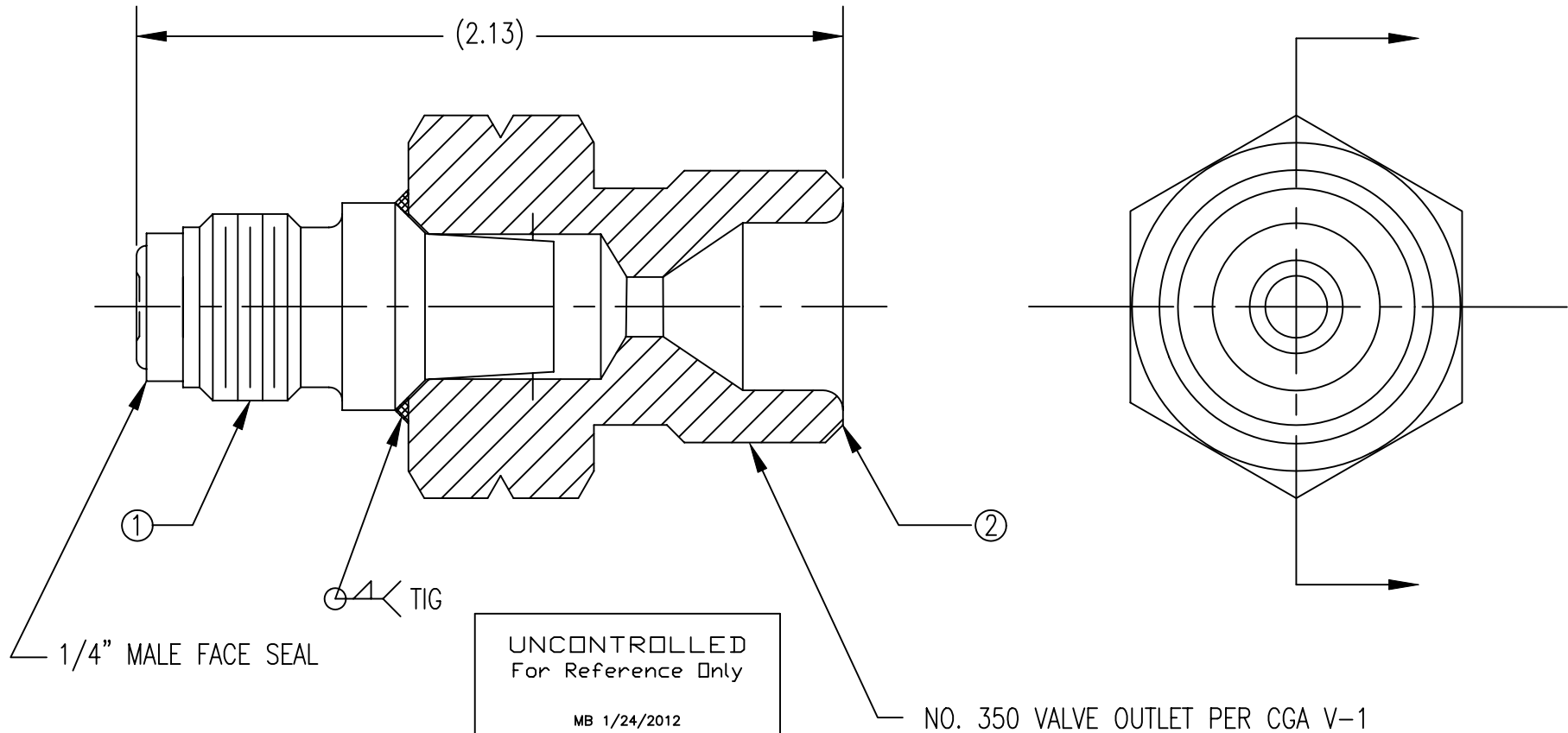


ITEM	PART NAME	PART NUMBER	QTY
1	316L SS DROP-IN MFS	AD-XXXSS-4MFS	1
2	316L SS ADAPTOR	AD-350MSS-4FNPT	1



NOTES:

1. WELDED AS SHOWN.
2. BRUSHED OR ELECTROPOLISHED AFTER WELDING.
3. WELD LEAK TESTED WITH 1000 PSIG NITROGEN.
4. BOTH ENDS CAPPED, SINGLE POLY BAGGED. BAG MARKED WITH GFP LOGO, P/N, AND "ULTRASONICALLY DI CLEANED".

THIS DOCUMENT CONTAINS INFORMATION THAT IS THE PROPRIETARY AND CONFIDENTIAL PROPERTY OF GASFLO PRODUCTS INC. AND MAY BE USED ONLY FOR AUTHORIZED PURPOSES. THIS DOCUMENT MAY NOT BE REPRODUCED WITHOUT GASFLO PRODUCTS INC. PRIOR WRITTEN CONSENT.

MAT'L: SEE BOM	
DWN: MB	SCALE: 2:1
APPVD:	DATE: 1/24/12

<i>GasFlo Products Inc.</i> <i>Fairfield, N.J.</i>
CGA 350 ADAPTOR x 1/4 MFS WELDED ASSEMBLY
DWG: AD-350MSS-4MFS