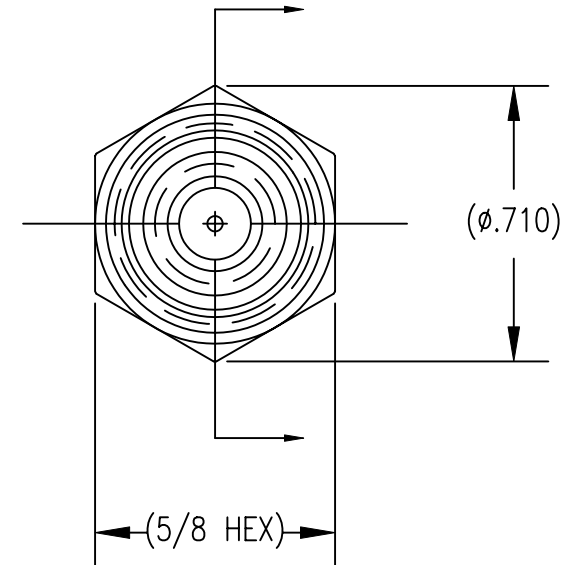
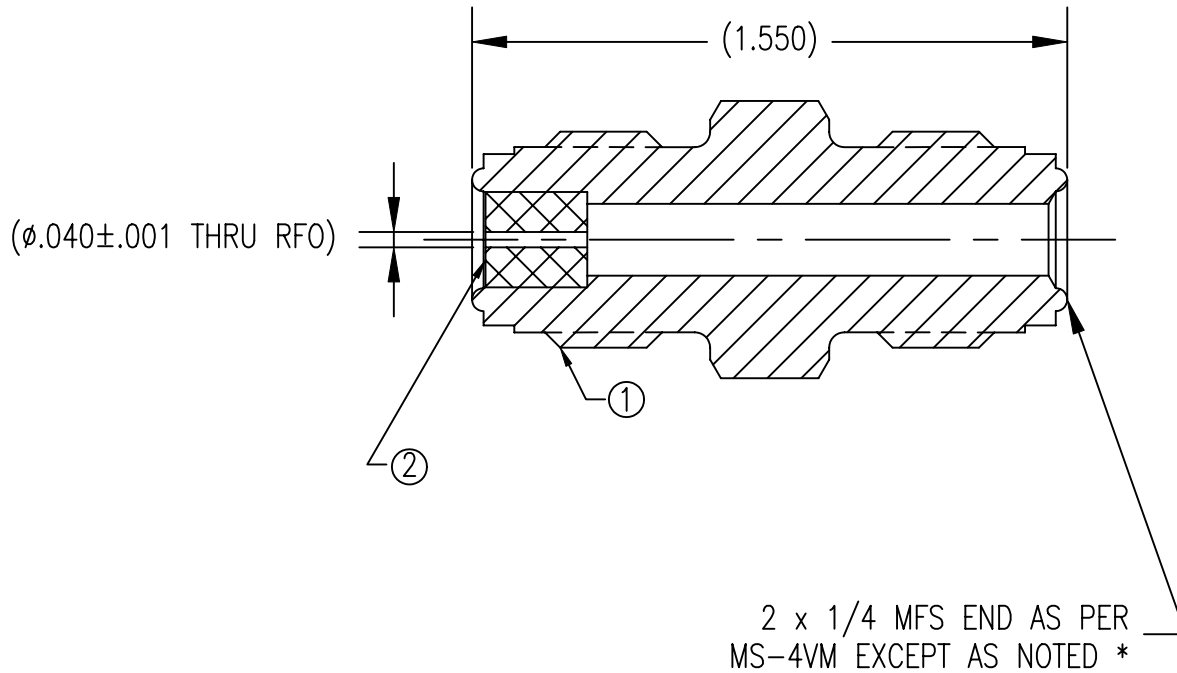


ITEM	PART NAME	MATERIAL	QTY
1	BODY	316L SST	1
2	RFO	316L SST	1



UNCONTROLLED
FOR REFERENCE
ONLY
MB 8/24/2011

NOTES:

1. DIMENSIONS ARE IN INCHES.
2. RFO IS INSTALLED BY GASFLO.
3. ASSEMBLY IS ULTRASONICALLY D.I. CLEANED.
4. ASSEMBLY IS SINGLE POLY BAGGED AND LABELED WITH GFP LOGO & P/N.

THIS DOCUMENT CONTAINS INFORMATION THAT IS THE PROPRIETARY AND CONFIDENTIAL PROPERTY OF GASFLO PRODUCTS INC. AND MAY BE USED ONLY FOR AUTHORIZED PURPOSES. THIS DOCUMENT MAY NOT BE REPRODUCED WITHOUT GASFLO PRODUCTS INC. PRIOR WRITTEN CONSENT.

MAT'L: SEE B.O.M.	
DWN: MB	SCALE: NTS
APPVD:	DATE: 8/24/11

GasFlo Products Inc.
Fairfield, N.J.

SALES DWG.- ADPATOR W/ .040 RFO
1/4 MFS x 1/4 MFS

DWG: SALES-AD-44SS-MFSMFS-.040