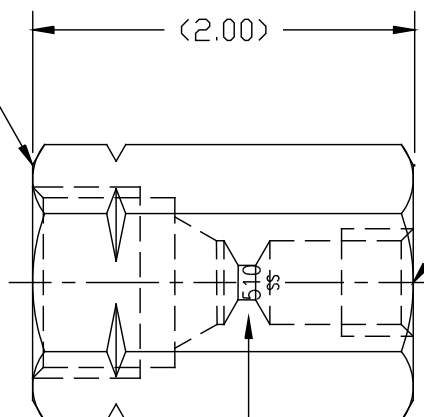


(Ø3/16 THRU)
(CGA 510 VALVE OUTLET
PER CGA V-1)



(1/4" FEMALE NPT)

NOTE 2

UNCONTROLLED
For Reference Only

MB 1/30/2013

NOTES:

1. DIMENSIONS ARE IN INCHES.
2. MARK AS SHOWN: 2 MM HIGH "510"
1 1/2 MM HIGH "SS"
3. CLEANED AND PACKAGED FOR OXYGEN SERVICE.

GasFlo Products Inc.
Fairfield, N.J.

SALES DWG.- ADAPTER, 316 SST
CGA 510F x 1/4 FNPT

THIS DOCUMENT CONTAINS INFORMATION THAT IS THE PROPRIETARY AND CONFIDENTIAL PROPERTY OF GASFLO PRODUCTS INC. AND MAY BE USED ONLY FOR AUTHORIZED PURPOSES. THIS DOCUMENT MAY NOT BE REPRODUCED WITHOUT GASFLO PRODUCTS INC. PRIOR WRITTEN CONSENT.

MAT'L: 1 1/4" HEX 316L SST	
DWN: MB	SCALE: NTS
SHT.: 1 of 1	DATE: 1/30/13

DWG: SALES-AD-510FSS-4FNPT