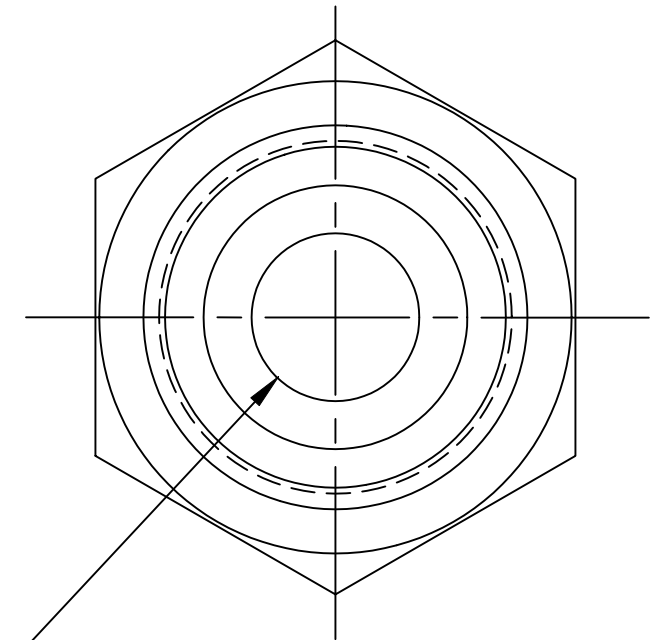
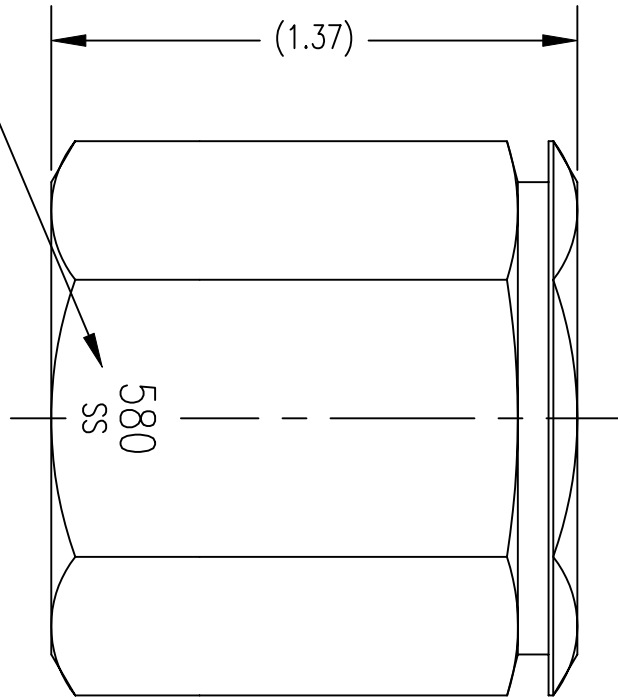


| ITEM | PART NAME | PART NUMBER | MATERIAL | QTY |
|------|-------------|-----------------|---------------------------|-----|
| 1 | ADAPTOR | AD-580FSS-BL | 303 SST | 1 |
| 2 | CLIP RING | CLIP-1.25D-CHR | CHROME PLATED SPRING WIRE | 1 |
| 3 | 7" CHAIN | CHAIN-7.00-SS | 316L SST | 1 |
| 4 | HINGED RING | RING-1.187D-CHR | CHROME PLATED STEEL | 1 |

NOTE 2



UNCONTROLLED
FOR REFERENCE
ONLY
MB 2/21/2008

NO. 580 VALVE OUTLET PER CGA V-1,
DELETE $\phi 3/16$ THRU HOLE.

NOTES:

- DIMENSIONS ARE IN INCHES.
- MARK AS SHOWN: 2 MM HIGH "580"
1 1/2 MM HIGH "SS"
MARKING MUST BE PERMANENT.
- CLEAN & PACKAGE FOR OXYGEN SERVICE.
- RING, CHAIN, AND CLIP RING DELETED
FROM THIS VIEW FOR CLARITY.

THIS DOCUMENT CONTAINS INFORMATION THAT IS THE PROPRIETARY AND CONFIDENTIAL PROPERTY OF GASFLO PRODUCTS INC. AND MAY BE USED ONLY FOR AUTHORIZED PURPOSES. THIS DOCUMENT MAY NOT BE REPRODUCED WITHOUT GASFLO PRODUCTS INC. PRIOR WRITTEN CONSENT.

| | |
|-----------------------------------|-------------------|
| TOLERANCES UNLESS OTHERWISE NOTED | |
| FRACTIONS +/- 1/64 | ANGLES= +/- 1 DEG |
| .XX= +/- .010 | .XXX= +/- .005 |
| CONCENTRICITY T.I.R.= .005 | |
| SURFACE FINISH= 63 Ra | |
| MAT'L SEE B.O.M. | |
| DWN MB | SCALE: 2:1 |
| APPVD | DATE 4/17/02 |

| | |
|---|----------------------|
| <i>GasFlo Products Inc.</i> <i>Fairfield, N.J.</i> | |
| SALES DRAWING- BLANK OUTLET ADAPTER CGA 580 W/ RING GROOVE | |
| DWG | SALES-AD-580FSS-BL-R |