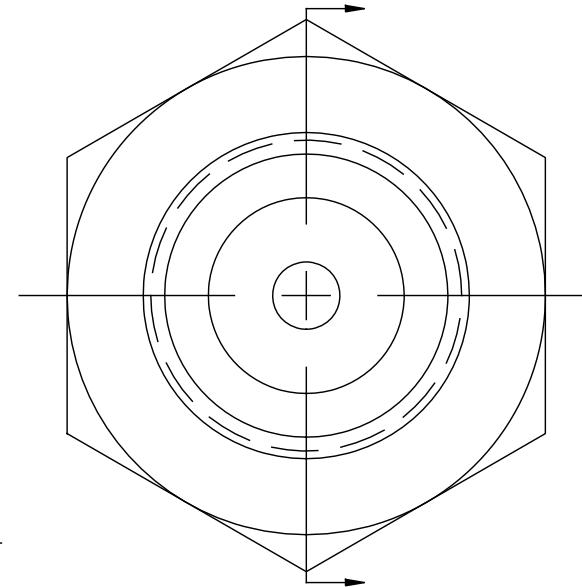


DIN 1 VALVE OUTLET
AS PER DIN 477
EXCEPT THRU HOLE



NOTES:

1. DIMENSIONS ARE IN INCHES.
2. MARK ON HEX FLAT AS SHOWN:
.100" HIGH "DIN 1"
.080" HIGH "SS"
MARKING MUST BE PERMANENT.
3. CLEANED AND PACKAGED FOR OXYGEN SERVICE.

UNCONTROLLED
FOR
REFERENCE ONLY
FAS 12/12/2013

GasFlo Products Inc.
Fairfield, N.J.

SALES DRAWING – BLANK ADAPTER
DIN 1

THIS DOCUMENT CONTAINS INFORMATION THAT IS THE PROPRIETARY AND CONFIDENTIAL PROPERTY
OF GASFLO PRODUCTS INC. AND MAY BE USED ONLY FOR AUTHORIZED PURPOSES.
THIS DOCUMENT MAY NOT BE REPRODUCED WITHOUT GASFLO PRODUCTS INC. PRIOR WRITTEN CONSENT.

MAT'L: 1-1/4" HEX 303 SST

DWN: FAS

SCALE: 2:1

SHT.: 1 of 1

DATE: 12/12/13

DWG: SALES-AD-DIN1MSS-BL