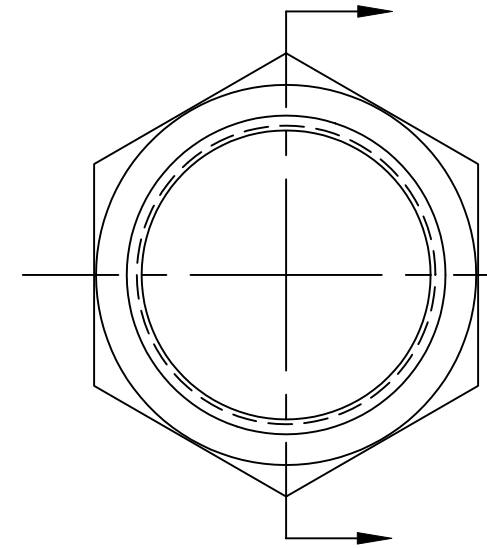
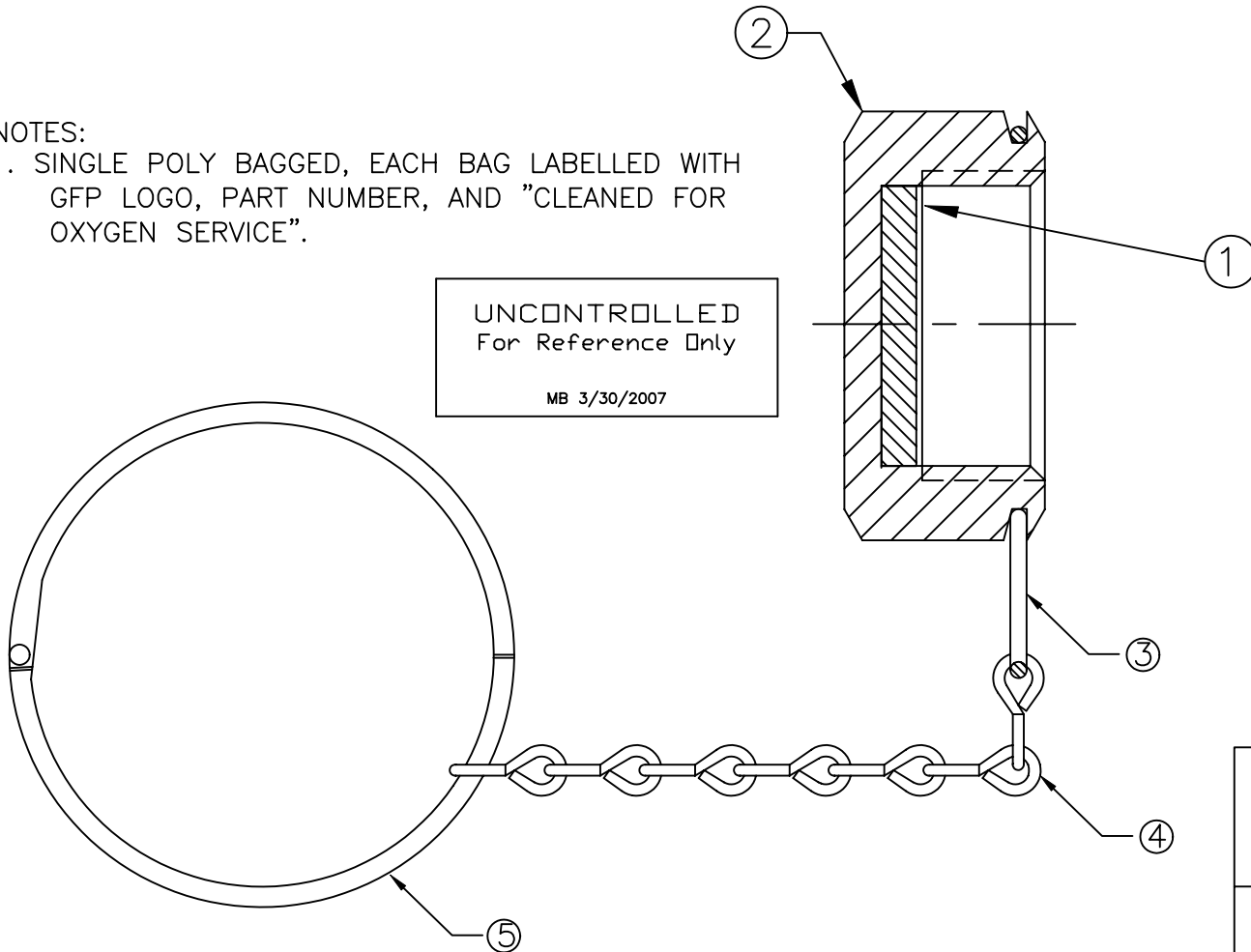


ITEM	PART NAME	MATERIAL	QTY.
1	DISC	HDPE	1
2	CAP NUT	BRASS CDA-360	1
3	CLIP RING	BRASS SPRING WIRE	1
4	CHAIN	BRASS	1
5	LATCH RING	CHROME PLATED STEEL	1

NOTES:

1. SINGLE POLY BAGGED, EACH BAG LABELLED WITH GFP LOGO, PART NUMBER, AND "CLEANED FOR OXYGEN SERVICE".

UNCONTROLLED
For Reference Only
MB 3/30/2007



REV	EXPLANATION	DATE
A	REDRAWN	1/3/2005

GasFlo Products Inc.
Fairfield, N.J.

SALES DRAWING- VALVE OUTLET CAP W/ POLY DISC
BRASS CGA 300, 320, 326, 346

THIS DOCUMENT CONTAINS INFORMATION THAT IS THE PROPRIETARY AND CONFIDENTIAL PROPERTY OF GASFLO PRODUCTS INC. AND MAY BE USED ONLY FOR AUTHORIZED PURPOSES. THIS DOCUMENT MAY NOT BE REPRODUCED WITHOUT GASFLO PRODUCTS INC. PRIOR WRITTEN CONSENT.

DWN: MB SCALE: NTS
APPVD: DATE: 5/6/98

DWG: SALES-CAP-30BR-PR REV. A