

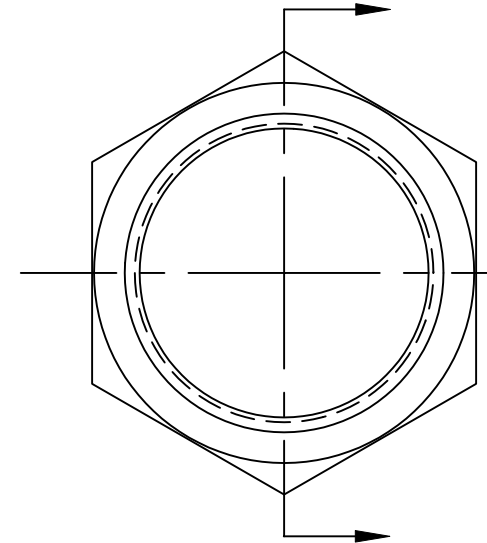
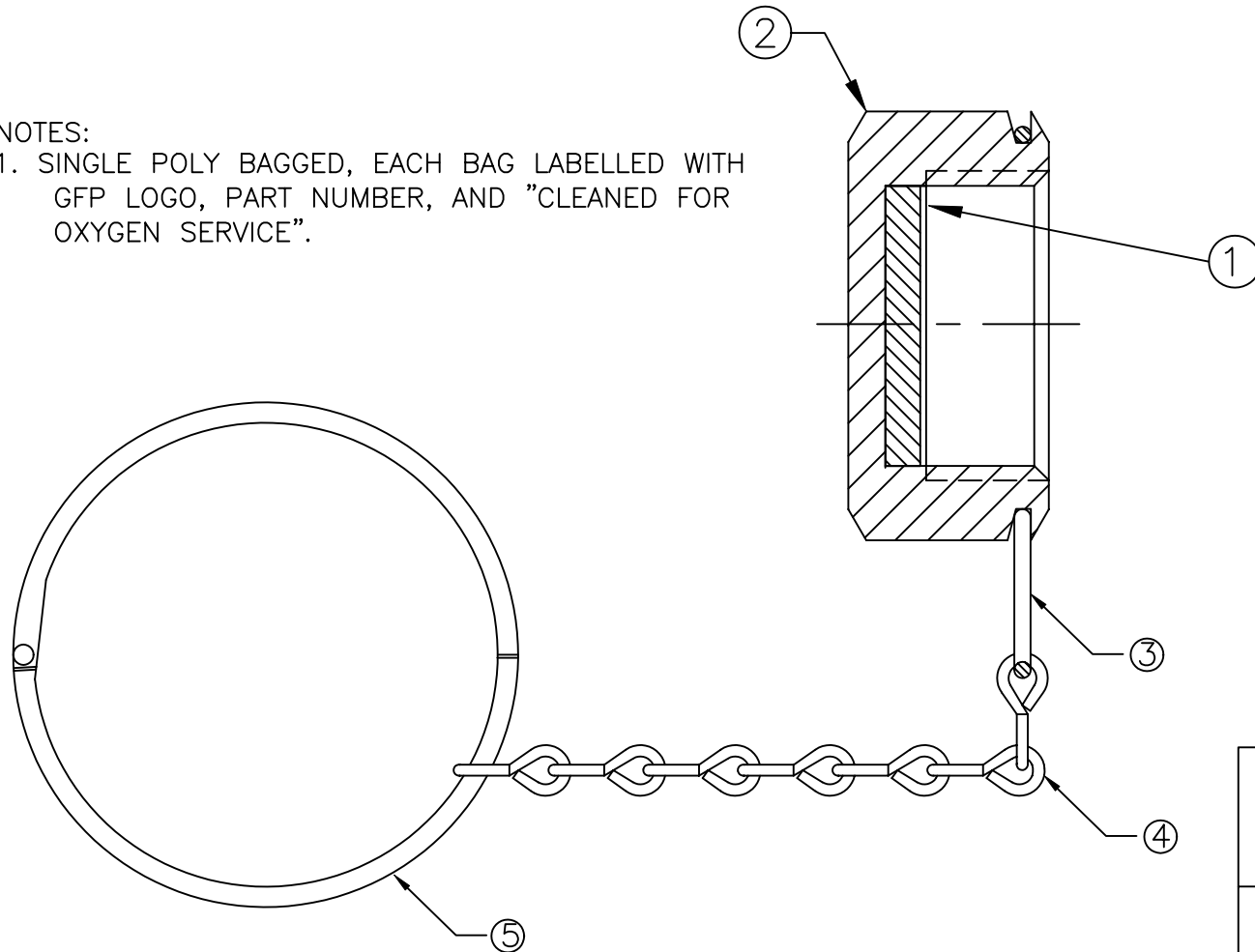
ITEM	PART NAME	MATERIAL	QTY.
1	DISC	HDPE	1
2	CAP NUT	303 SST	1
3	CLIP RING	CHROME PLATED SPRING WIRE	1
4	CHAIN	316L SST	1
5	LATCH RING	CHROME PLATED STEEL	1

UNCONTROLLED
For Reference Only

MB 3/30/2007

NOTES:

1. SINGLE POLY BAGGED, EACH BAG LABELLED WITH GFP LOGO, PART NUMBER, AND "CLEANED FOR OXYGEN SERVICE".



REV	EXPLANATION	DATE
A	REDRAWN	1/3/2005

GasFlo Products Inc.
Fairfield, N.J.

SALES DRAWING- VALVE OUTLET CAP W/ POLY DISC
SST CGA 300, 320, 326, 346

THIS DOCUMENT CONTAINS INFORMATION THAT IS THE PROPRIETARY AND CONFIDENTIAL PROPERTY OF GASFLO PRODUCTS INC. AND MAY BE USED ONLY FOR AUTHORIZED PURPOSES. THIS DOCUMENT MAY NOT BE REPRODUCED WITHOUT GASFLO PRODUCTS INC. PRIOR WRITTEN CONSENT.

DWN MB SCALE: NTS
APPVD DATE 5/6/98

DWG SALES-CAP-30SS-PR REV. A