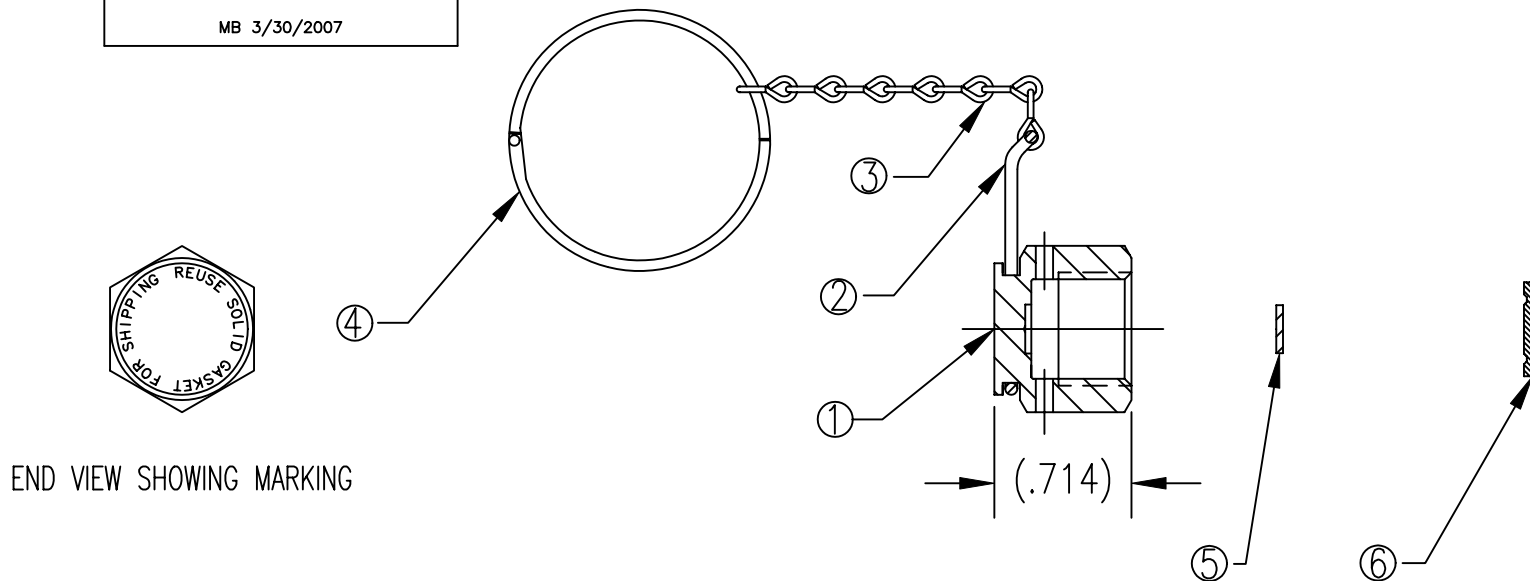


ITEM	PART NAME	MATERIAL	QTY
1	CAP NUT	303 SST	1
2	CLIP RING	SST	1
3	CHAIN	316L SST (3.75" LONG)	1
4	HINGED RING	SST	1
5	MAGNET	HIGH ENERGY BONDED FERRITE	1
6	BLIND GASKET	NICKEL	1

UNCONTROLLED
For Reference Only
MB 3/30/2007



END VIEW SHOWING MARKING

NOTES:

1. NUT THREADS ARE SILVER PLATED.
2. POLY BAGGED BLIND GASKET IS PACKAGED LOOSE IN BAG WITH CAP.
3. ULTRASONICALLY D.I. CLEANED AND PACKAGED.

GasFlo Products Inc.
Fairfield, N.J.

SALES DWG.- CYLINDER VALVE OUTLET CAP
1/4 FACE SEAL W/GASKET

THIS DRAWING AND THE INFORMATION THEREON ARE PROPRIETARY AND CONFIDENTIAL PROPERTY OF GASFLO PRODUCTS INC. AND MAY BE USED ONLY FOR AUTHORIZED PURPOSES. THIS DRAWING MAY NOT BE REPRODUCED WITHOUT GASFLO PRODUCTS INC. PRIOR WRITTEN CONSENT.

MAT'L	SEE B.O.M.	
DWN MB	SCALE: NTS	
APPVD	DATE 7/18/05	

DWG SALES-CAP-GT4SS-FS-MGP