

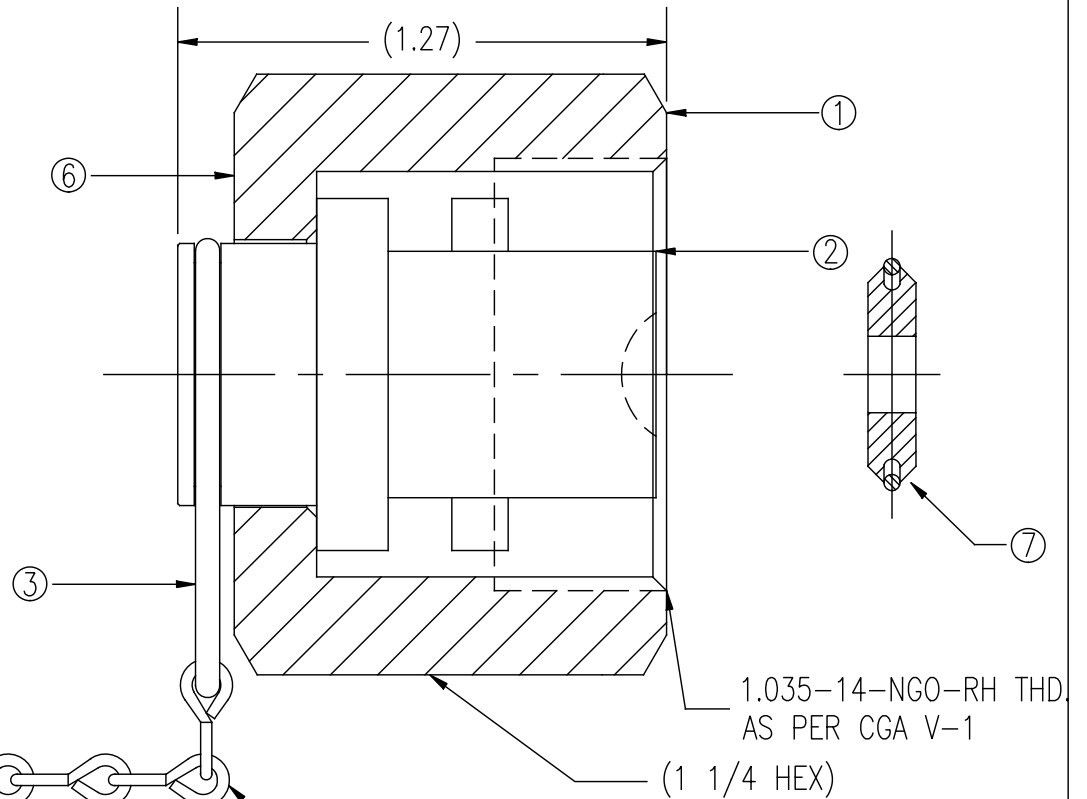
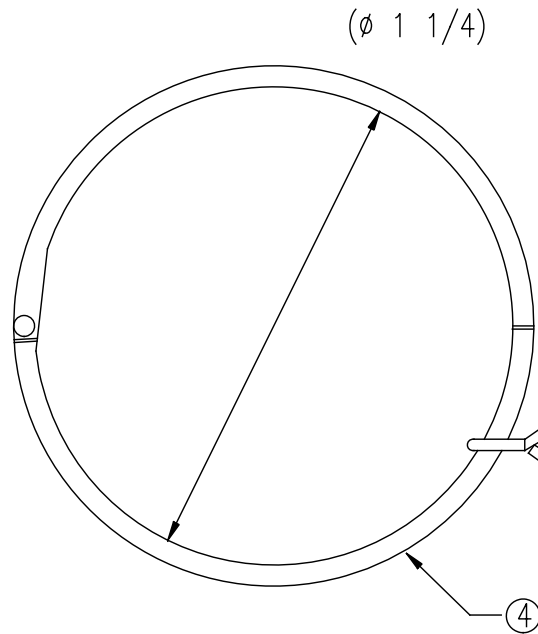
NOTES:

1. NUT THREADS ARE SILVER PLATED.
2. PLUG IS ELECTROPOLISHED FOR CORROSIVE RESISTANCE.
3. ULTRASONICALLY D.I. CLEANED AND POLYBAGGED.
4. ORDER PART NUMBER: CAP-GT63SS-K.

| ITEM | PART NAME | MATERIAL | QTY |
|------|-------------|--------------------------|-----|
| 1 | NUT | STAINLESS STEEL | 1 |
| 2 | PLUG | STAINLESS STEEL | 1 |
| 3 | SWIVEL CLIP | STAINLESS STEEL | 1 |
| 4 | HINGED RING | STAINLESS STEEL | 1 |
| 5 | CHAIN | STAINLESS STEEL (3.75"L) | 1 |
| 6 | LABEL | VINYL/MYLAR | 1 |
| 7 | GASKET | PCTFE | 1 |

UNCONTROLLED
For Reference Only

MB 10/24/2007



GasFlo Products Inc.
Fairfield, N.J.

SALES DWG.- ALL SST GAS TIGHT VALVE OUTLET CAP
CGA 632-642 WITH PCTFE GASKET

THIS DOCUMENT CONTAINS INFORMATION THAT IS THE PROPRIETARY AND CONFIDENTIAL PROPERTY OF GASFLO PRODUCTS INC. AND MAY BE USED ONLY FOR AUTHORIZED PURPOSES. THIS DOCUMENT MAY NOT BE REPRODUCED WITHOUT GASFLO PRODUCTS INC. PRIOR WRITTEN CONSENT.

DWN MB
APPVD

SCALE: NTS
DATE 1/22/03

DWG SALES-CAP-GT63SS-K