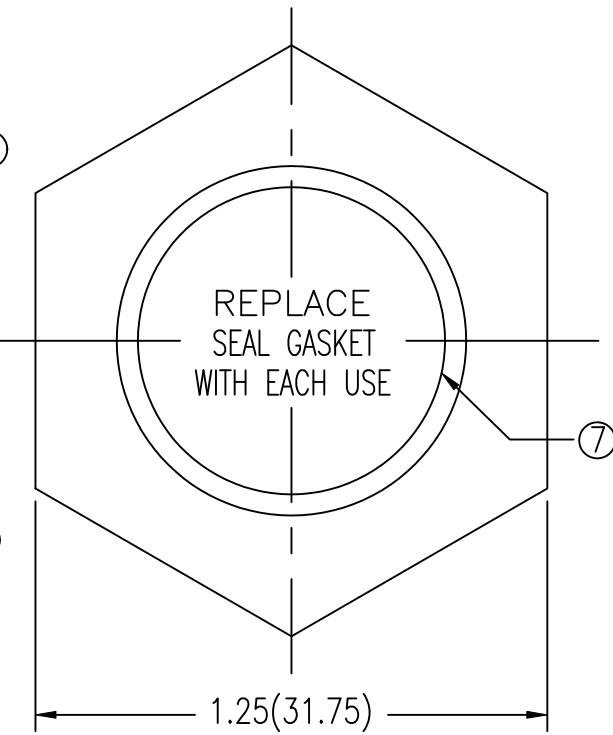
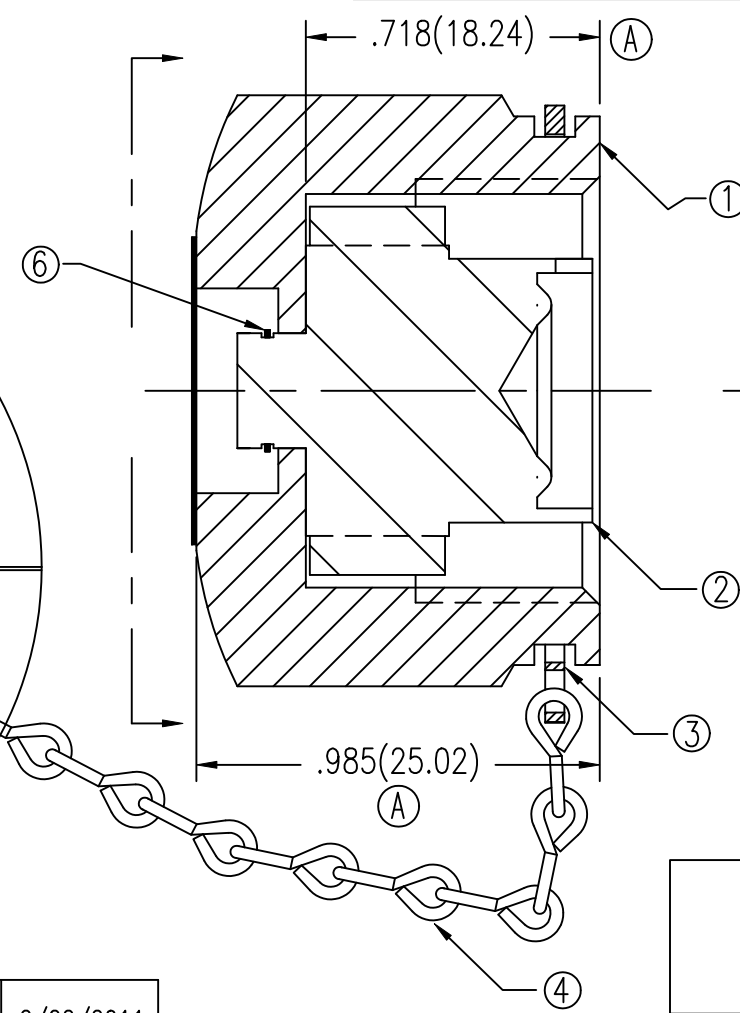
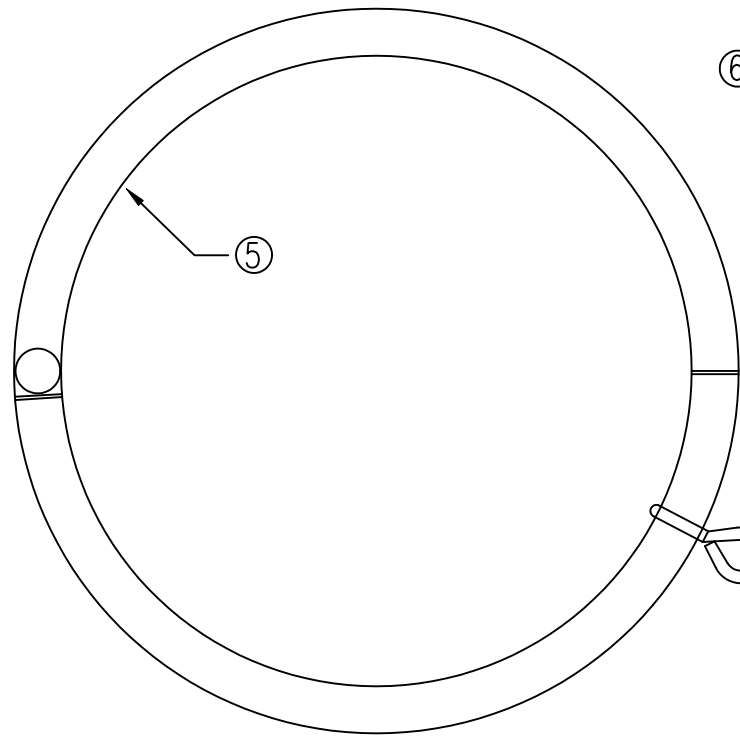


NOTES:

1. ASSEMBLE AS SHOWN.
2. CAP OPEN END OF PLUG PRIOR TO PACKAGING.
3. SINGLE POLY BAG. LABEL BAG WITH GFP LOG, PART NUMBER, "ULTRASONICALLY D.I. CLEANED", & "MADE IN THE USA".
4. DIMENSIONS IN INCHES AND METRIC ().

ITEM	PART NAME	MATERIAL	QTY.
1	CAP NUT	303 STAINLESS STEEL	1
2	PLUG	316 STAINLESS STEEL	1
3	RETAINING RING	PH 15-7 STAINLESS STEEL	1
④	CHAIN	316 STAINLESS STEEL 3.75" (95.25) LG.	1
5	BOOK RING	18-8 STAINLESS STEEL	1
6	RETAINING RING	ZINC & YELLOW CHROMATE COATED STEEL	1
7	LABEL	VINYL/MYLAR	1

UNCONTROLLED
For Reference Only
MB 2/22/2011



GasFlo Products Inc.
Fairfield, N.J.
SALES DWG.-CAP GAS TIGHT CGA 630 SERIES
FOR TON UNIT W/RING & CHAIN SS
DWG SALES-CAP-GT63SS-TU REV. A

A	ADDED DIMENSIONS .985 (25.02), .718 (18.24) AND 3.75 (95.25) ALSO ADDED NOTE 4.	2/22/2011	MAT'L SEE B.O.M.
REV	DESCRIPTION	DATE	DWN MB SCALE: NTS
			APPVD DATE 1/4/08

THIS DOCUMENT CONTAINS INFORMATION THAT IS THE PROPRIETARY AND CONFIDENTIAL PROPERTY OF GASFLO PRODUCTS INC. AND MAY BE USED ONLY FOR AUTHORIZED PURPOSES. THIS DOCUMENT MAY NOT BE REPRODUCED WITHOUT GASFLO PRODUCTS INC. PRIOR WRITTEN CONSENT