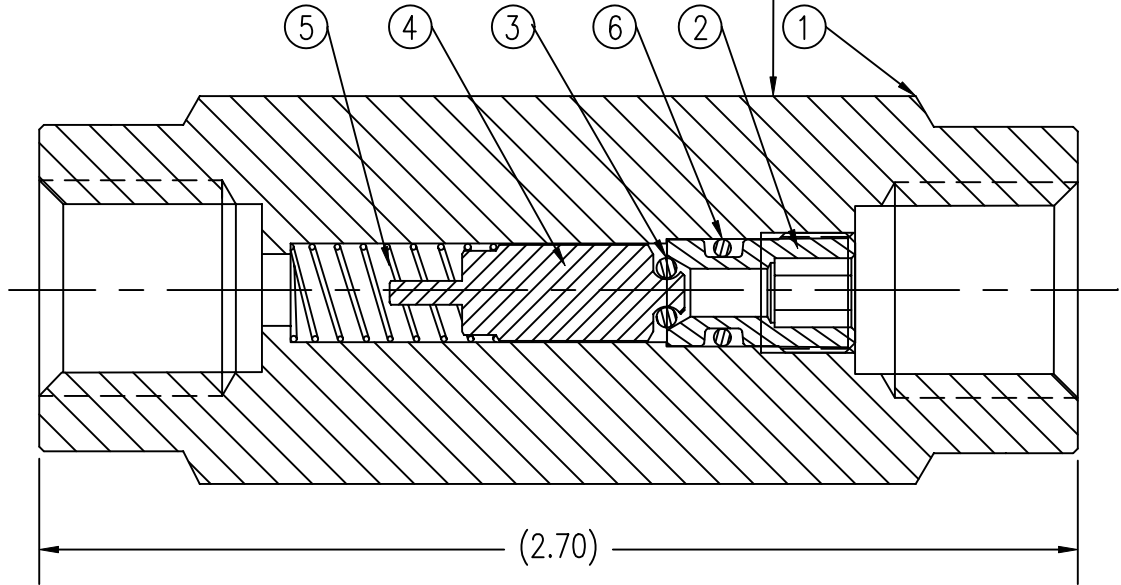
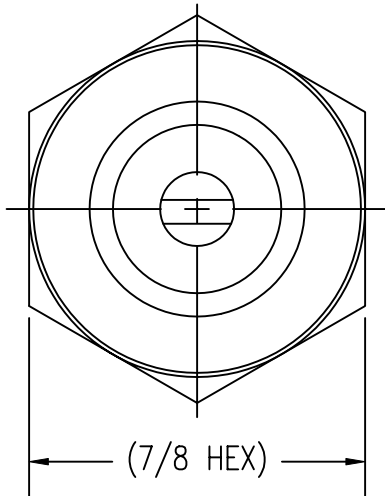


LETTER	REVISIONS	DATE
A	BRASS MATERIAL FOR ITEMS 2 & 4 WAS 316L SST	5/31/2005

ITEM	PART NAME	MATERIAL	QTY
1	BODY	BRASS CDA-360	1
②	SEAT	BRASS CDA-360	1
3	O-RING	VITON	1
④	VALVE	BRASS CDA-360	1
5	SPRING	316L SST	1
6	O-RING	VITON	1

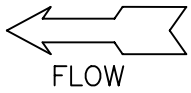
UNCONTROLLED
For Reference Only
MB 3/30/2007

HEX FLAT MARKED WITH FLOW ARROW



DESIGN DATA:

1. CRACKING PRESSURE: .25 PSIG TO 1.00 PSIG
2. MAX. WORKING PRESSURE: 3000 PSIG



GasFlo Products Inc.
Fairfield, N.J.

SALES DWG.- BRASS CHECK VALVE
1/4" FNPT ENDS

THIS DOCUMENT CONTAINS INFORMATION THAT IS THE PROPRIETARY AND CONFIDENTIAL PROPERTY OF GASFLO PRODUCTS INC. AND MAY BE USED ONLY FOR AUTHORIZED PURPOSES. THIS DOCUMENT MAY NOT BE REPRODUCED WITHOUT GASFLO PRODUCTS INC. PRIOR WRITTEN CONSENT.

DIMENSIONS ARE IN INCHES	
DWN MB	SCALE: NTS
APPVD	DATE 2/23/01

DWG SALES-CV-44BR-FF REV. A