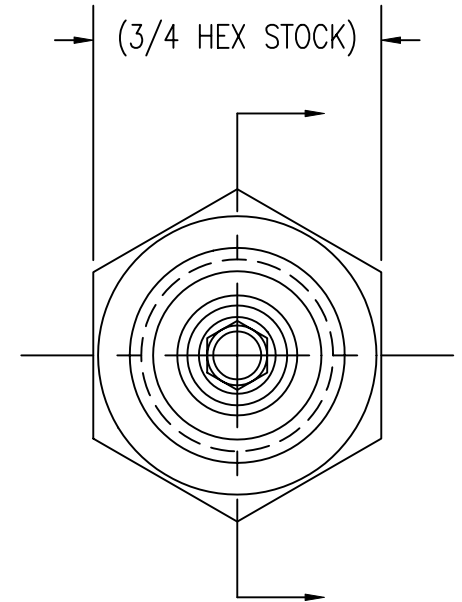
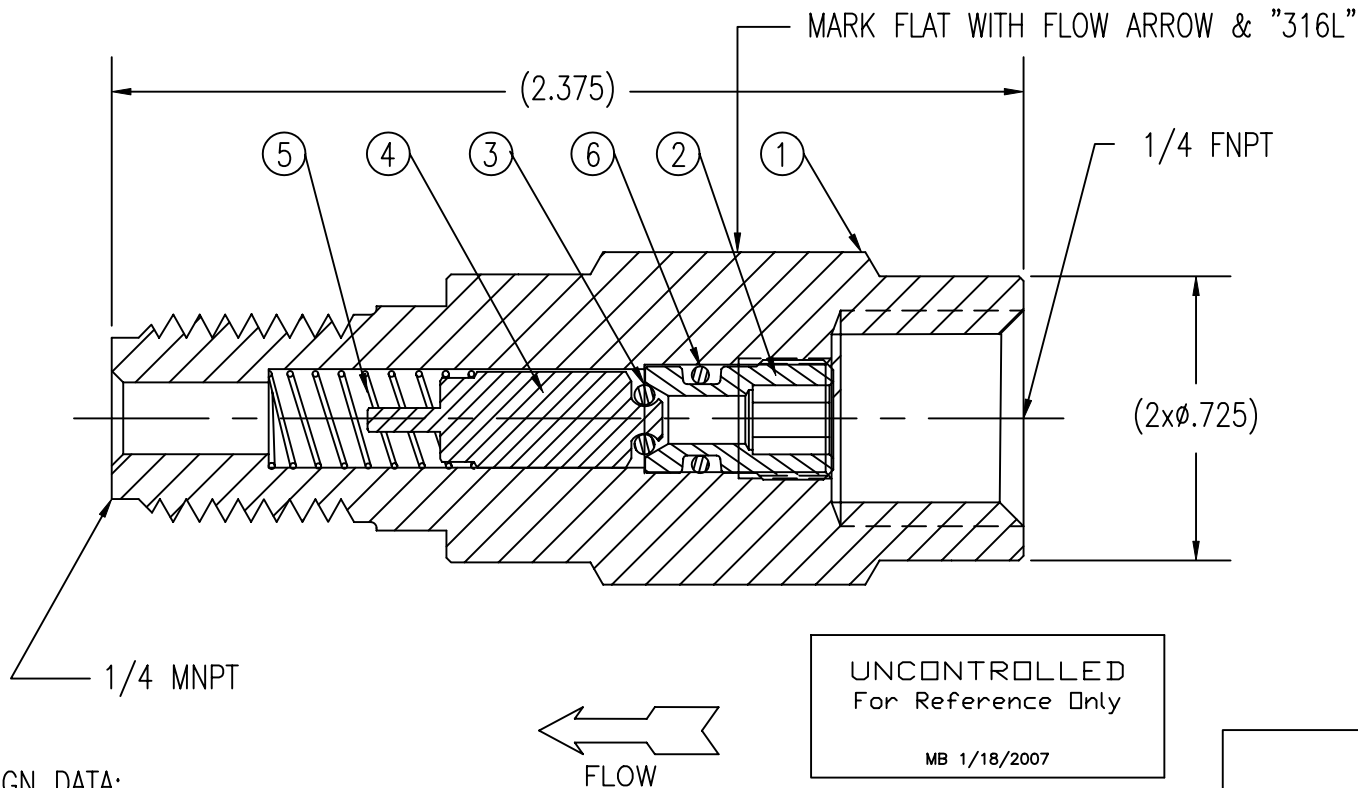


ITEM	PART NAME	MATERIAL	QTY
1	BODY	316L SST	1
2	SEAT	316L SST	1
3	O-RING	VITON	1
4	VALVE	316L SST	1
5	SPRING	316L SST	1
6	O-RING	VITON	1



DESIGN DATA:

1. CRACKING PRESSURE: .25 PSIG TO 1.00 PSIG
2. MAX. WORKING PRESSURE: 3000 PSIG

UNCONTROLLED
For Reference Only

MB 1/18/2007

GasFlo Products Inc.
Fairfield, N.J.

SALES DWG.— 316L SST CHECK VALVE
1/4" FNPT x 1/4" MNPT

THIS DOCUMENT CONTAINS INFORMATION THAT IS THE PROPRIETARY AND CONFIDENTIAL PROPERTY OF GASFLO PRODUCTS INC. AND MAY BE USED ONLY FOR AUTHORIZED PURPOSES.
THIS DOCUMENT MAY NOT BE REPRODUCED WITHOUT GASFLO PRODUCTS INC. PRIOR WRITTEN CONSENT.

MAT'L SEE B.O.M.

DWN MB

APPVD

SCALE: NTS

DATE 1/18/07

DWG SALES-CV-44SS-FM