



GasFlo Products HPST-4 Series Valves are air operated to allow for remote automated cycling. This high pressure, spring type diaphragm design is available in normally closed or normally open configurations. Valve remains in a static state unless proper actuation pressure is continuously applied. HPST-4 Series Valves provide superior leak integrity in 1/4" and 3/8" applications with pressure ranges from vacuum to 3500 psig.

## FEATURES

- SPRING TYPE DESIGN
- AIR OPERATED ACTUATION
- NORMALLY CLOSED OR NORMALLY OPEN
- STANDARD FORGED BODY PIPE THREADED DESIGNS
- STANDARD BAR STOCK BODY FOR NON-PIPE THREADED DESIGNS (BOTTOM MOUNT STANDARD)
- POSITIVE SHUT-OFF
- CLEANED FOR OXYGEN SERVICE
- 100% HELIUM LEAK TESTED
- AVAILABLE WITH ELECTROPOLISHED ID SURFACE ON REQUEST
- CUSTOM MATERIALS AND CONFIGURATIONS AVAILABLE ON REQUEST

## MATERIALS OF CONSTRUCTION

- **BODY OPTIONS:**  
BRASS, NICKEL PLATED BRASS, 316L STAINLESS STEEL
- **SEAT OPTIONS:**  
PCTFE OR POLYIMIDE
- **WETTED DIAPHRAGM:**  
ELGILOY®
- **SPRING ASSEMBLY:**  
316L STAINLESS STEEL
- **LOWER STEM:**  
316L STAINLESS STEEL
- **BONNET:**  
BRASS, NICKEL PLATED BRASS OR 303 STAINLESS STEEL
- **UPPER STEM:**  
303 STAINLESS STEEL
- **ACTUATOR HOUSING:**  
NICKEL PLATED ALUMINUM

ELGILOY® REGISTERED TRADEMARK OF ELGILOY SPECIALTY METALS.

## APPLICATIONS

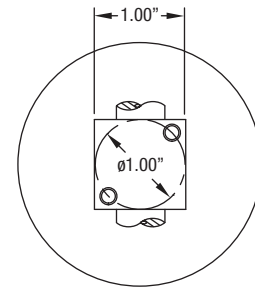
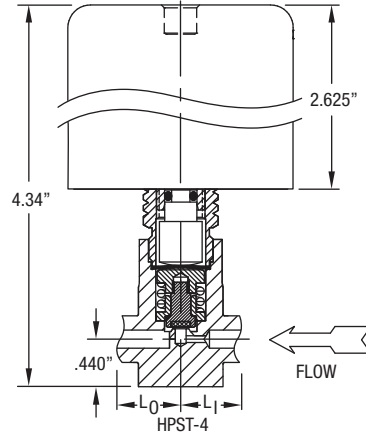
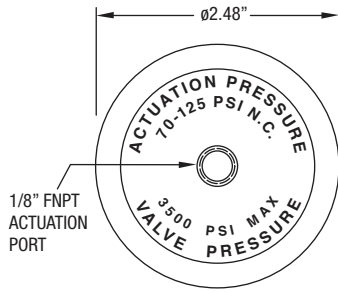
- GAS/FLUID CONTROL PANELS
- MANIFOLD SYSTEMS
- SAMPLING SYSTEMS
- GAS ANALYZERS
- GENERAL SHUT-OFF

## END CONNECTION OPTIONS

- 1/4" MALE AND 1/4" FEMALE PIPE THREAD
- 1/4" COMPRESSION
- 1/4 MALE AND 1/4 FEMALE FACE SEAL
- 1/4" AND 3/8" ORBITAL TUBE WELD
- CUSTOM CONNECTIONS



**DIMENSIONAL INFORMATION**



BOTTOM MOUNT STANDARD  
ON BAR STOCK DESIGNS ONLY

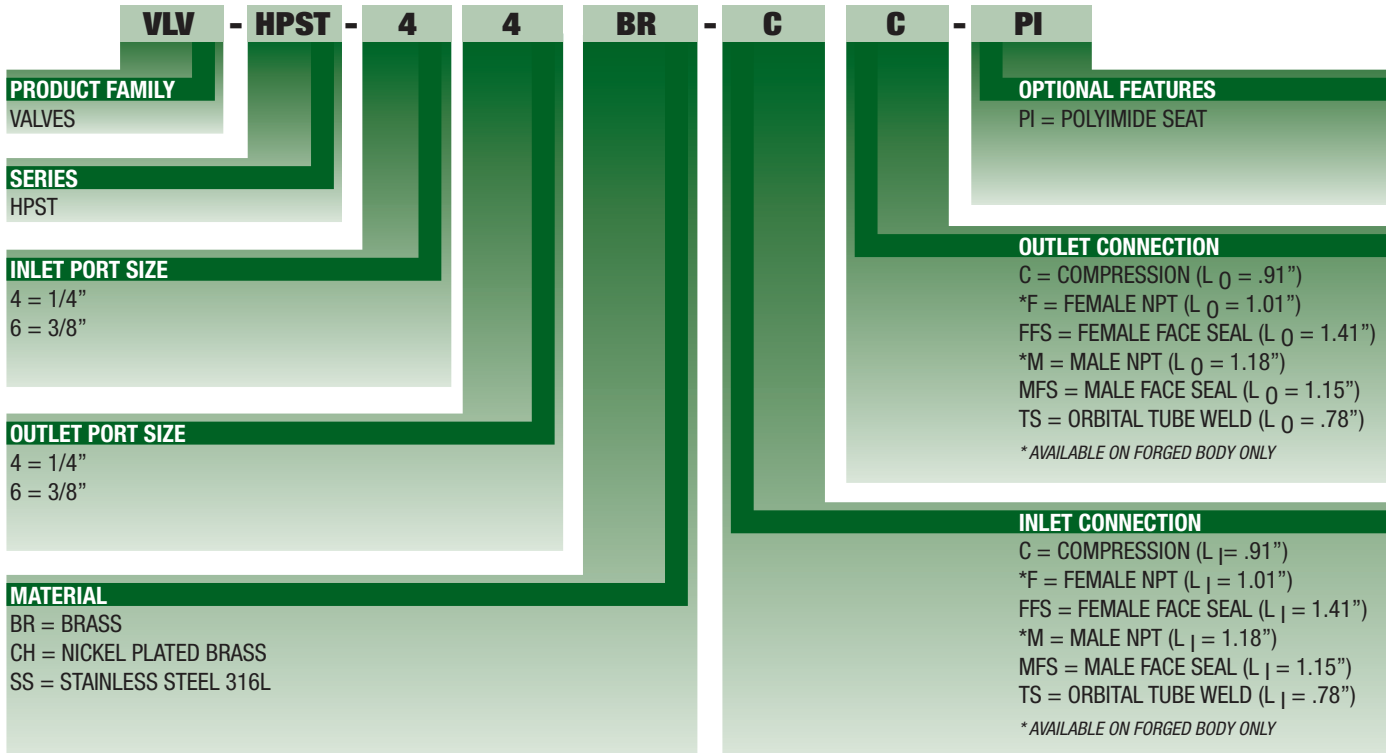
All dimensions are in inches - for reference only, subject to change.

**SPECIFICATIONS**

<b>PRESSURE RATING:</b> 3500 PSIG	<b>STANDARD SEAT MATERIAL:</b> PCTFE	<b>MAX. ALLOWABLE SEAT LEAKAGE:</b> 2 x 10 <sup>-8</sup> ATM CC/SEC He
<b>ACTUATION PRESSURE:</b> 70 - 125 PSIG	<b>TEMPERATURE LIMITS PCTFE SEAT:</b> -65° F TO 150° F	<b>MAX. INBOARD LEAKAGE:</b> 2 x 10 <sup>-8</sup> ATM CC/SEC He
<b>FLOW COEFFICIENT Cv =</b> .26	<b>TEMPERATURE LIMITS OPTIONAL POLYIMIDE SEAT:</b> -65° F TO 250° F	<b>STANDARD BOTTOM MOUNT ON BAR STOCK BODY:</b> 2 x 10-32 TAPPED HOLES ON A 1" BOLT CIRCLE
<b>SEAT ORIFICE SIZE:</b> Ø.125"	<b>WETTED DIAPHRAGM:</b> ELGILOY®	<b>ACTUATION PORT:</b> 1/8" FEMALE NPT

**ORDERING INFORMATION**

**TYPICAL PART NUMBER**



ELGILOY® REGISTERED TRADEMARK OF ELGILOY SPECIALTY METALS.

REPAIR KIT PN: RK-77102, RK-HP-ST4

3 PORT, 4 PORT AND CUSTOM CONFIGURATIONS ARE AVAILABLE ON REQUEST. AVAILABLE MANUALLY OPERATED, SEE ST-4 SERIES.

Minimum order quantities may be required. Some inlet/outlet combinations may not be available.

VALVE, FITTING OR OTHER COMPONENT FUNCTION, PROPER INSTALLATION, MATERIALS COMPATIBILITY, ADEQUATE RATINGS, OPERATION AND MAINTENANCE ARE THE RESPONSIBILITY OF THE SYSTEM DESIGNER AND USER.



PRODUCT FAILURE, IMPROPER SELECTION OR IMPROPER USE OF THE PRODUCTS AND/OR SYSTEMS DESCRIBED HEREIN OR RELATED ITEMS CAN CAUSE DEATH, PERSONAL INJURY AND PROPERTY DAMAGE.



MADE IN USA

19 Industrial Road, Fairfield, NJ 07004 Phone: 973-276-9011 Fax: 973-276-9014 www.gasflo.com

