

GasFlo Products LPSL Series Valves are air operated to allow for remote automated cycling. This low pressure springless diaphragm design remains closed unless proper actuation pressure is continuously applied. LPSL Series Valves provide superior leak integrity for critical gas/fluid systems with pressure ranges from vacuum to 150 psig.

FEATURES

- BAR STOCK CONSTRUCTION
- AIR OPERATED ACTUATION
- NORMALLY CLOSED
- COMPACT SIZE
- SPRINGLESS DESIGN
- METAL DIAPHRAGM SEALED
- POSITIVE SHUT-OFF
- LOW INTERNAL VOLUME
- HIGH CYCLE LIFE
- LEAK TEST PORT
- ULTRASONICALLY DI CLEANED
- 100% HELIUM LEAK TESTED
- STANDARD BOTTOM MOUNT DESIGN
- AVAILABLE WITH ELECTROPOLISHED ID SURFACE ON REQUEST
- CUSTOM MATERIALS AND CONFIGURATIONS AVAILABLE ON REQUEST

MATERIALS OF CONSTRUCTION

- BODY OPTIONS:
BRASS, NICKEL PLATED BRASS, 316L STAINLESS STEEL, MONEL® R405, OR ALUMINUM SILICON BRONZE
- SEAT:
PCTFE
- WETTED DIAPHRAGM:
316L STAINLESS STEEL
- ACTUATOR HOUSING:
NICKEL PLATED BRASS
- STEM:
316 STAINLESS STEEL

MONEL® - TM - SPECIAL METALS CORPORATION

APPLICATIONS

- GAS/FLUID CONTROL PANELS
- VALVE MANIFOLD BOXES
- MANIFOLD SYSTEMS
- GAS ANALYZERS
- GENERAL SHUT-OFF

END CONNECTION OPTIONS

- 1/4" MALE AND 1/4" FEMALE PIPE THREAD
- 1/4" COMPRESSION
- 1/4" AND 3/8" TUBE SOCKET WELD
- 1/4" MALE AND 1/4" FEMALE FACE SEAL
- 1/4" AND 3/8" ORBITAL TUBE WELD
- CUSTOM CONNECTIONS

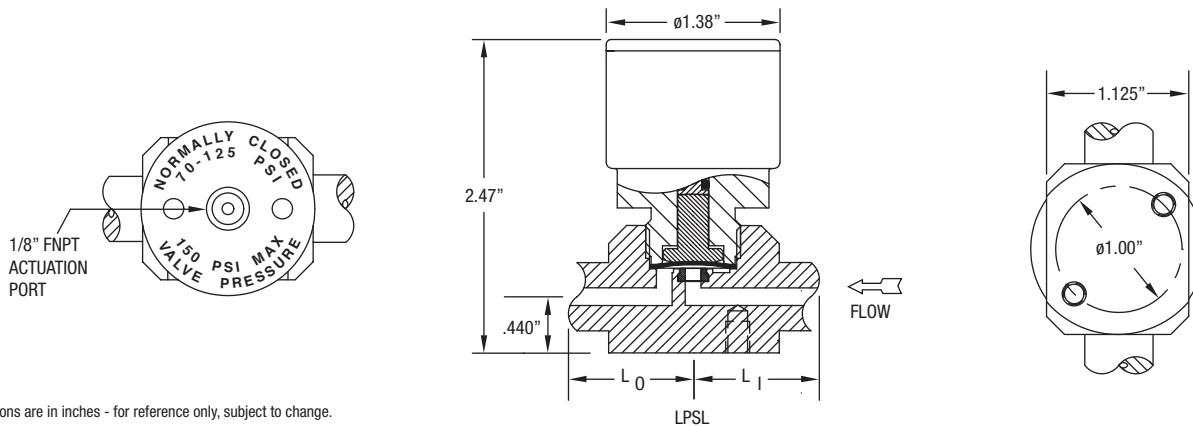


VLV-LPSL-2014 Rev. A

40 Green Pond Road, Rockaway, NJ 07866 Phone: 973-276-9011 Fax: 973-276-9014 www.gasflo.com

Member Compressed Gas Association

DIMENSIONAL INFORMATION



All dimensions are in inches - for reference only, subject to change.

SPECIFICATIONS

PRESSURE RATING: 150 PSIG
ACTUATION PRESSURE: 70 - 125 PSIG
FLOW COEFFICIENT C_v = .13
SEAT ORIFICE SIZE: Ø.125"

STANDARD SEAT MATERIAL: PCTFE
TEMPERATURE LIMITS: -65° F TO 150° F
MAX. ALLOWABLE SEAT LEAKAGE: 2 x 10-8 ATM CC/SEC He
MAX. INBOARD LEAKAGE: 2 x 10-8 ATM CC/SEC He

WETTED DIAPHRAGM: 316L SST
STANDARD BOTTOM MOUNT: 2 x #10-32 TAPPED HOLES
ACTUATION PORT: 1/8" FEMALE NPT

ORDERING INFORMATION

TYPICAL PART NUMBER

PRODUCT FAMILY VALVES	SERIES LPSL	INLET PORT SIZE 4 = 1/4" 6 = 3/8"	OUTLET PORT SIZE 4 = 1/4" 6 = 3/8"	MATERIAL ASB = ALUMINUM SILICON BRONZE BR = BRASS CH = NICKEL PLATED BRASS MO = MONEL® SS = STAINLESS STEEL 316L	OPTIONAL FEATURES CP = CONSTANT PURGE	OUTLET CONNECTION C = COMPRESSION (L ₀ = .91") F = FEMALE NPT (L ₀ = 1.01") FFS = FEMALE FACE SEAL (L ₀ = 1.48") M = MALE NPT (L ₀ = 1.36") MFS = MALE FACE SEAL (L ₀ = 1.15") SW = TUBE SOCKET WELD (L ₀ = 1.18") TS = ORBITAL TUBE WELD (L ₀ = .88")	INLET CONNECTION C = COMPRESSION (L ₁ = .91") F = FEMALE (L ₁ = 1.01") FFS = FEMALE FACE SEAL (L ₁ = 1.48") M = MALE NPT (L ₁ = 1.36") MFS = MALE FACE SEAL (L ₁ = 1.15") SW = TUBE SOCKET WELD (L ₁ = 1.18") TS = ORBITAL TUBE WELD (L ₁ = .88")
VLV	LPSL	4	4	SS	MFS	MFS	CP

MONEL® - TM - SPECIAL METALS CORPORATION

REPAIR KIT PN: RK-SL-DIA

3 PORT, 4 PORT AND CUSTOM CONFIGURATIONS ARE AVAILABLE ON REQUEST. ALSO AVAILABLE MANUALLY OPERATED, SEE SL AND QSL SERIES.

Minimum order quantities may be required. Some inlet/outlet combinations may not be available.

VALVE, FITTING OR OTHER COMPONENT FUNCTION, PROPER INSTALLATION, MATERIALS COMPATIBILITY, ADEQUATE RATINGS, OPERATION AND MAINTENANCE ARE THE RESPONSIBILITY OF THE SYSTEM DESIGNER AND USER.



PRODUCT FAILURE, IMPROPER SELECTION OR IMPROPER USE OF THE PRODUCTS AND/OR SYSTEMS DESCRIBED HEREIN OR RELATED ITEMS CAN CAUSE DEATH, PERSONAL INJURY AND PROPERTY DAMAGE.



MADE IN USA

40 Green Pond Road, Rockaway, NJ 07866 Phone: 973-276-9011 Fax: 973-276-9014 www.gasflo.com