



Manual Control Valve shown
with optional gauge port



Manual Control Valve shown
with optional inlet connection

GasFlo Products MC Series Manual Control Valves provide a positive shut off direct from a cylinder valve outlet when a regulator is not required. This packed type design is suitable for high pressure applications (3000 psig max) and offers basic flow metering capability. Available with a specified cylinder connection inlet and gauge port on request.

FEATURES

- BAR STOCK CONSTRUCTION
- PACKED TYPE DESIGN
- PRECISION BURNISHED STEM
- BASIC METERING CAPABILITY
- POSITIVE SHUT OFF
- HIGH TEMPERATURE RANGE
- CLEANED FOR OXYGEN SERVICE
- 100% LEAK TESTED
- CUSTOM MATERIALS AND CONFIGURATIONS AVAILABLE ON REQUEST

MATERIALS OF CONSTRUCTION

- **BODY OPTIONS:**
NICKEL PLATED BRASS, 316L STAINLESS STEEL OR MONEL®
- **PACKING:**
PTFE, 303 STAINLESS STEEL
- **BONNET NUT:**
303 STAINLESS STEEL
- **STEM:**
303 STAINLESS STEEL OR MONEL®
- **HANDLE:**
ABS PLASTIC
CUSTOM COLORS AVAILABLE ON REQUEST
- **LABEL:**
VINYL/MYLAR

MONEL® - TM - SPECIAL METALS CORPORATION

APPLICATIONS

- DIRECT TO CYLINDER OUTLET VALVE
- MANIFOLD SYSTEMS
- GENERAL SHUT-OFF

END CONNECTION OPTIONS

- 1/4" FEMALE PIPE THREAD
- CUSTOM CONNECTIONS



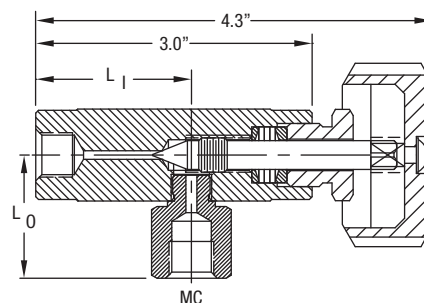
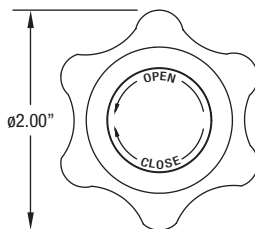
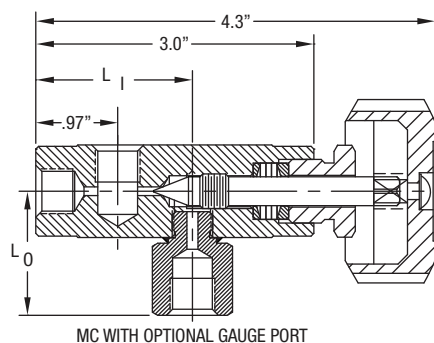
MADE IN USA

VLV-MC-2014 Rev. A

40 Green Pond Road, Rockaway, NJ 07866 Phone: 973-276-9011 Fax: 973-276-9014 www.gasflo.com

Member Compressed Gas Association

DIMENSIONAL INFORMATION



All dimensions are in inches - for reference only, subject to change.

SPECIFICATIONS

PRESSURE RATING: 3000 PSIG

FLOW COEFFICIENT $C_v = .35$

SEAT ORIFICE SIZE: 0.094

PACKING: PTFE, 303 STAINLESS STEEL

TEMPERATURE LIMITS: -65° F TO 450° F

MAX. ALLOWABLE SEAT LEAKAGE: 1×10^{-3} ATM CC/SEC N_2

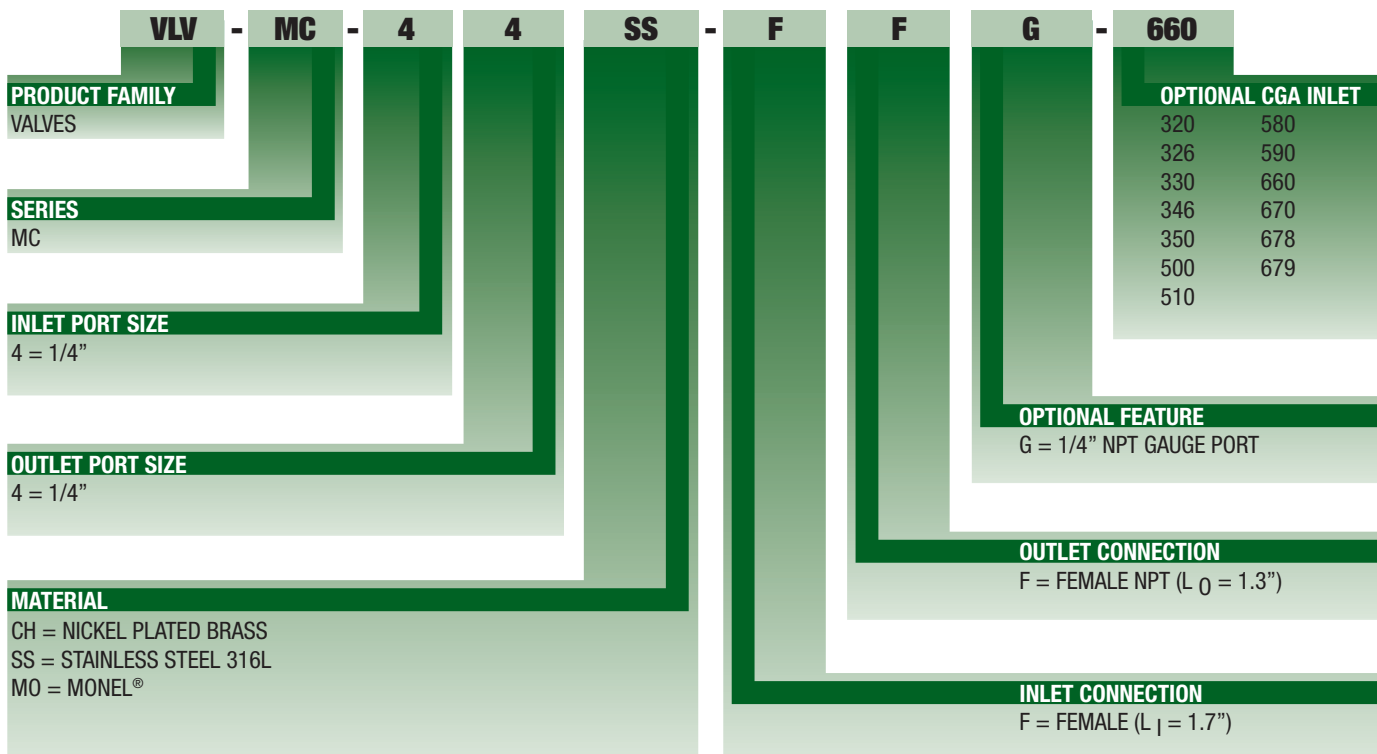
MAX. INBOARD LEAKAGE: 1×10^{-3} ATM CC/SEC N_2

WETTED STEM: 303 STAINLESS STEEL OR MONEL®

HANDLE: ABS PLASTIC

ORDERING INFORMATION

TYPICAL PART NUMBER



MONEL® - TM - SPECIAL METALS CORPORATION

Minimum order quantities may be required. Some inlet/outlet combinations may not be available.

VALVE, FITTING OR OTHER COMPONENT FUNCTION, PROPER INSTALLATION, MATERIALS COMPATIBILITY, ADEQUATE RATINGS, OPERATION AND MAINTENANCE ARE THE RESPONSIBILITY OF THE SYSTEM DESIGNER AND USER.



PRODUCT FAILURE, IMPROPER SELECTION OR IMPROPER USE OF THE PRODUCTS AND/OR SYSTEMS DESCRIBED HEREIN OR RELATED ITEMS CAN CAUSE DEATH, PERSONAL INJURY AND PROPERTY DAMAGE.



MADE IN USA

VLV-MC-2014 Rev. A

40 Green Pond Road, Rockaway, NJ 07866 Phone: 973-276-9011 Fax: 973-276-9014 www.gasflo.com

Member Compressed Gas Association



GASFLOPRODUCTS

© GasFlo Products, Inc. 2025