

GasFlo Products NV Series Packed Type Needle Valves provide a positive shut off and basic flow metering capability. Available in lecture bottle control, angle, and in-line control configurations, these miniature valves are machined from bar stock and are suitable for high pressure applications.

FEATURES

- BAR STOCK CONSTRUCTION
- PACKED TYPE DESIGN
- PRECISION BURNISHED STEM
- BASIC METERING CAPABILITY
- POSITIVE SHUT-OFF
- HIGH PRESSURE OPTION AVAILABLE
- CLEANED FOR OXYGEN SERVICE
- 100% LEAK TESTED
- CUSTOM MATERIALS AND CONFIGURATIONS AVAILABLE ON REQUEST

MATERIALS OF CONSTRUCTION

- **BODY OPTIONS:**
BRASS, NICKEL PLATED BRASS, 316L STAINLESS STEEL OR MONEL® R405
- **PACKING:**
GLASS FILLED PTFE, 316L STAINLESS STEEL
- **BONNET NUT:**
BRASS, NICKEL PLATED BRASS, 316L STAINLESS STEEL OR MONEL® R405
- **STEM:**
316L STAINLESS STEEL OR MONEL® R405
- **HANDLE:**
ABS PLASTIC
- **LABEL:**
VINYL/MYLAR

MONEL® - TM - SPECIAL METALS CORPORATION

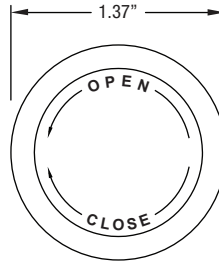
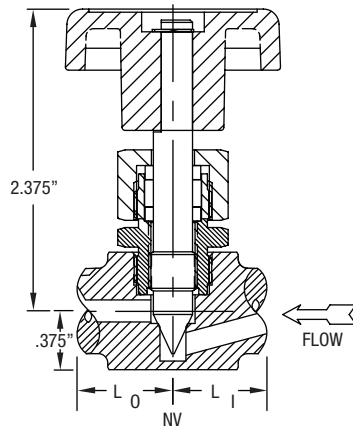
APPLICATIONS

- REGULATOR OUTLET VALVES
- LECTURE BOTTLE CONTROL VALVES
- MANIFOLD SYSTEMS
- SAMPLING SYSTEMS
- GAS ANALYZERS
- PURGE ASSEMBLIES
- GENERAL SHUT-OFF

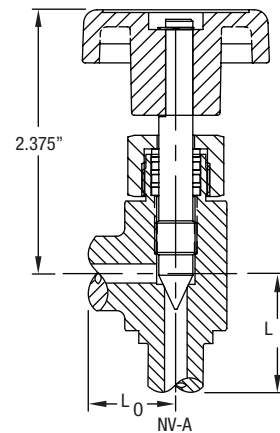
END CONNECTION OPTIONS

- 1/8" MALE AND 1/8" FEMALE PIPE THREAD
- 1/4" MALE PIPE THREAD
- 1/4" HOSE BARB
- CGA 110 MALE
- CUSTOM CONNECTIONS

DIMENSIONAL INFORMATION



All dimensions are in inches - for reference only, subject to change.



SPECIFICATIONS

PRESSURE RATING:

LINE AND ANGLE = 3500 PSIG

(STAINLESS STEEL 6000 PSIG OPTION)

LECTURE BOTTLE CONTROL VALVE = 3000 PSIG

FLOW COEFFICIENT $C_v = .27$

SEAT ORIFICE SIZE: $\phi .167"$

PACKING: GLASS FILLED PTFE, STAINLESS STEEL

TEMPERATURE LIMITS: -65°F TO 150°F

MAX. ALLOWABLE SEAT LEAKAGE: 1×10^{-3} ATM CC/SEC N_2

MAX. INBOARD LEAKAGE: 1×10^{-3} ATM CC/SEC N_2

WETTED STEM: 303 STAINLESS STEEL OR MONEL[®]

HANDLE: ABS PLASTIC

ORDERING INFORMATION

TYPICAL PART NUMBER

| | | | | | | | | | | | | |
|---|---|-----------|---|----------|----------|---|-----------|---|--|----------|---|-----------|
| VLV | - | NV | - | 4 | 4 | - | SS | - | M | M | - | 6K |
| PRODUCT FAMILY VALVES | | | | | | | | | OPTIONAL FEATURES A = ANGLE PATTERN 6K = RATED FOR 6000 PSIG (SS ONLY) | | | |
| SERIES NV | | | | | | | | | IN-LINE OUTLET CONNECTION M = MALE NPT ($L_0 = 1.00"$) H = HOSE BARB ($L_0 = .96"$) | | | |
| INLET PORT SIZE 2 = $1/8"$ 4 = $1/4"$ 5 = CGA 110 MALE* | | | | | | | | | ANGLE OUTLET CONNECTION F = FEMALE NPT ($L_0 = .88"$) | | | |
| OUTLET PORT SIZE 2 = $1/8"$ 4 = $1/4"$ | | | | | | | | | IN-LINE INLET CONNECTION M = MALE NPT ($L_1 = 1.00"$) or *M = CGA 110 MALE ($L_0 = .96"$) | | | |
| MATERIAL BR = BRASS CH = NICKEL PLATED BRASS SS = STAINLESS STEEL 316L MO = MONEL [®] | | | | | | | | | ANGLE INLET CONNECTION M = MALE NPT ($L_1 = 1.00"$) | | | |

MONEL[®] - TM - SPECIAL METALS CORPORATION

FULL SIZED PACKED TYPE NEEDLE VALVE ALSO AVAILABLE, SEE PLL SERIES.

Minimum order quantities may be required. Some inlet/outlet combinations may not be available.

VALVE, FITTING OR OTHER COMPONENT FUNCTION, PROPER INSTALLATION, MATERIALS COMPATIBILITY, ADEQUATE RATINGS, OPERATION AND MAINTENANCE ARE THE RESPONSIBILITY OF THE SYSTEM DESIGNER AND USER.



PRODUCT FAILURE, IMPROPER SELECTION OR IMPROPER USE OF THE PRODUCTS AND/OR SYSTEMS DESCRIBED HEREIN OR RELATED ITEMS CAN CAUSE DEATH, PERSONAL INJURY AND PROPERTY DAMAGE.



19 Industrial Road, Fairfield, NJ 07004 Phone: 973-276-9011 Fax: 973-276-9014 www.gasflo.com

Member Compressed Gas Association



© GasFlo Products, Inc. 2014