

GasFlo Products QLL Series Valves are manufactured with an extended inlet leg and provide quarter turn, positive shut off for critical gas/fluid systems. The Lever handle and multi port collar design allows for visual open/closed indication and simple lever reorientation when required. This springless diaphragm valve offers superior leak integrity for Specialty Gas, Chemical, Instrumentation, Semiconductor, Medical and general purpose applications with pressure ranges from vacuum to 3500 psig.

FEATURES

- BAR STOCK CONSTRUCTION
- EXTENDED LONG LEG INLET
- QUARTER TURN LEVER HANDLE
- ADJUSTABLE HANDLE ORIENTATION
- POSITION INDICATOR RING
- SPRINGLESS DESIGN
- METAL DIAPHRAGM SEALED
- POSITIVE SHUT-OFF
- QUICK ACTING OPEN TO CLOSE
- LOW INTERNAL VOLUME
- HIGH CYCLE LIFE
- LEAK TEST PORT
- ULTRASONICALLY DI CLEANED
- 100% HELIUM LEAK TESTED
- AVAILABLE WITH PANEL MOUNT OPTIONS
- AVAILABLE WITH ELECTROPOLISHED ID SURFACE
- AVAILABLE IN REVERSE FLOW DESIGNS

MATERIALS OF CONSTRUCTION

- BODY OPTIONS:
BRASS, NICKEL PLATED BRAS, 316L STAINLESS STEEL, MONEL R405, OR ALUMINUM SILICON BRONZE
- SEAT OPTIONS:
PCTFE OR POLYIMIDE
- WETTED DIAPHRAGM:
316L STAINLES STEEL
- BONNET NUT:
303 STAINLESS STEEL
- STEM:
416 STAINLESS STEEL
- HANDLE:
CLEAR ANAODIZED ALUMINUM
CUSTOM COLORS AVAILABLE ON REQUEST
- LABELS:
VINYL/MYLAR

MONEL® - TM—SPECIAL METALS CORPORATION

APPLICATIONS

- PURGE ASSEMBLIES
- GAS/FLUID CONTROL PANELS
- MANIFOLD SYSTEMS
- SAMPLING SYSTEMS
- GAS ANAYLERS
- GENERAL SHUT-OFF

END CONNECTION OPTIONS

- 1/4" MALE AND 1/4" FEMALE PIPE THREAD
- 1/4" COMPRESSION
- 1/4" AND 3/8" TUBE SOCKET WELD
- 1/4" PIPE SOCKET WELD
- 1/4 MALE AND 1/4 FEMALE FACE SEAL
- 1/4" AND 3/8" ORBITAL TUBE WELD
- CUSTOM CONNECTIONS

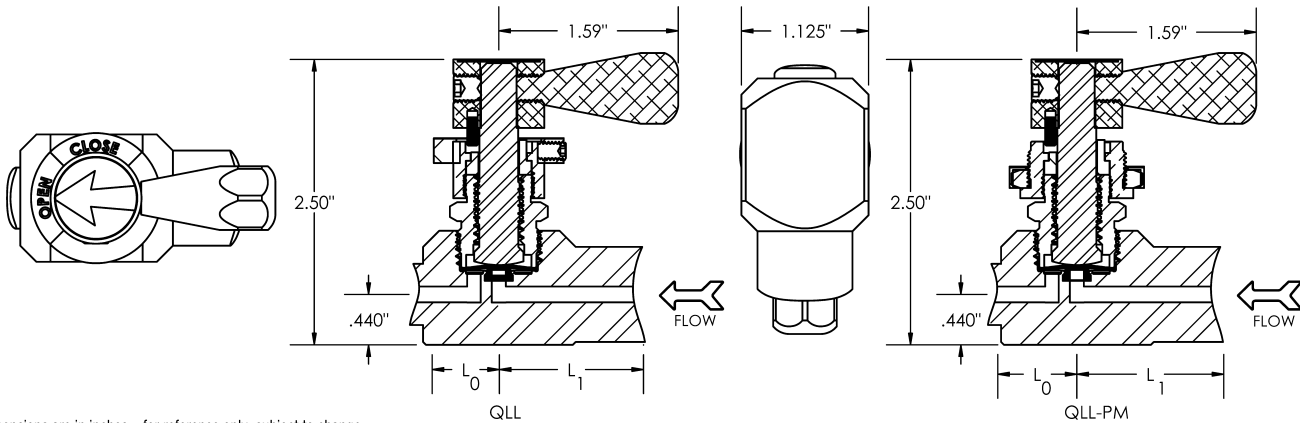


VLV-QSL-2016 REV. A

19 Industrial Road, Fairfield, NJ 07004 Phone: 973-276-9011 Fax: 973-276-9014 www.gasflo.com

Member Compressed Gas Association

DIMENSIONAL INFORMATION



All dimensions are in inches—for reference only, subject to change.

SPECIFICATIONS

PRESSURE RATING: 3500 PSIG FLOW COEFFICIENT $C_v = .13$ SEAT ORIFICE SIZE: $\varnothing.125"$	STANDARD SEAT MATERIAL: PCTFE TEMPERATURE LIMITS PCTFE SEAT: $-65^\circ F$ TO $150^\circ F$ TEMPERATURE LIMITS OPTIONAL POLYIMIDE SEAT: $-65^\circ F$ TO $250^\circ F$ WETTED DIAPHRAGM: 316L SST	MAX. ALLOWABLE SEAT LEAKAGE: 2×10^{-8} ATM CC/SEC He MAX. INBOARD LEAKAGE 2×10^{-8} ATM CC/SEC He OPTIONAL BOTTOM MOUNT: 2 x 10-32 TAPPED HOLES ON A 1" BOLT CIRCLE OPTIONAL PANEL MOUNT: PANEL HOLE SIZE: 57/64"
---	--	--

ORDERING INFORMATION

TYPICAL PART NUMBER

VLV	-	QLL	-	4	-	4	-	SS	-	M	-	C	-	PI
PRODUCT FAMILY										OPTIONAL FEATURES				
VALVES										BM = BOTTOM MOUNT				
SERIES										PI = POLYIMIDE SEAT				
QLL										PM = PANEL MOUNT				
INLET PORT SIZE										OUTLET CONNECTION				
4 = 1/4"										C = COMPRESSION ($L_0 = .91"$)				
R4 = REVERSE FLOW 1/4"										F = FEMALE NPT ($L_0 = 1.01"$)				
OUTLET PORT SIZE										FFS = FEMALE FACE SEAL ($L_0 = 1.48"$)				
4 = 1/4"										M = MALE NPT ($L_0 = 1.36"$)				
6 = 3/8"										MFS = MALE FACE SEAL ($L_0 = 1.15"$)				
OUTLET PORT SIZE										P = PIPE SOCKET WELD ($L_0 = 1.01"$)				
ASB = ALUMINUM SILICON BRONZE										SW = TUBE SOCKET WELD ($L_0 = 1.18"$)				
BR = BRASS										TS = ORBITAL TUBE WELD ($L_0 = .88"$)				
CH = NICKEL PLATED BRASS										INLET CONNECTION				
MO = MONEL®										C = COMPRESSION ($L_1 = 1.70"$)				
SS = STAINLESS STEEL 316L										F = FEMALE NPT ($L_1 = 1.37"$)				
										FFS = FEMALE FACE SEAL ($L_1 = 2.27"$)				
										M = MALE NPT ($L_1 = 2.15"$)				
										MFS = MALE FACE SEAL ($L_1 = 1.94"$)				
										P = PIPE SOCKET WELD ($L_1 = 1.37"$)				
										SW = TUBE SOCKET WELD ($L_1 = 1.97"$)				
										TS = ORBITAL TUBE WELD ($L_1 = 1.67"$)				

MONEL® - TM—SPECIAL METALS CORPORATION

REPAIR KIT PN: RK-SL-DIA

CUSTOM CONFIGURATIONS ARE AVAILABLE ON REQUEST. ALSO AVAILABLE WITH PNEUMATIC OPERATOR, SEE LPLL AND HPLL SERIES.

Minimum order quantities may be required. Some inlet/outlet combinations may not be available.

VALVE, FITTING OR OTHER COMPONENT FUNCTION, PROPER INSTALLATION, MATERIALS COMPATIBILITY, ADEQUATE RATINGS, OPERATION AND MAINTENANCE ARE THE RESPONSIBILITY OF THE SYSTEM DESIGNER AND USER.



PRODUCT FAILURE, IMPROPER SELECTION OR IMPROPER USE OF THE PRODUCTS AND/OR SYSTEMS DESCRIBED HEREIN OR RELATED ITEMS CAN CAUSE DEATH, PERSONAL INJURY AND PROPERTY DAMAGE.



MADE IN USA

VLV-QLL-2014 REV A.

19 Industrial Road, Fairfield, NJ 07004 Phone: 973-276-9011 Fax: 973-276-9014 www.gasflo.com

Member Compressed Gas Association



©GasFlo Products, Inc. 2016