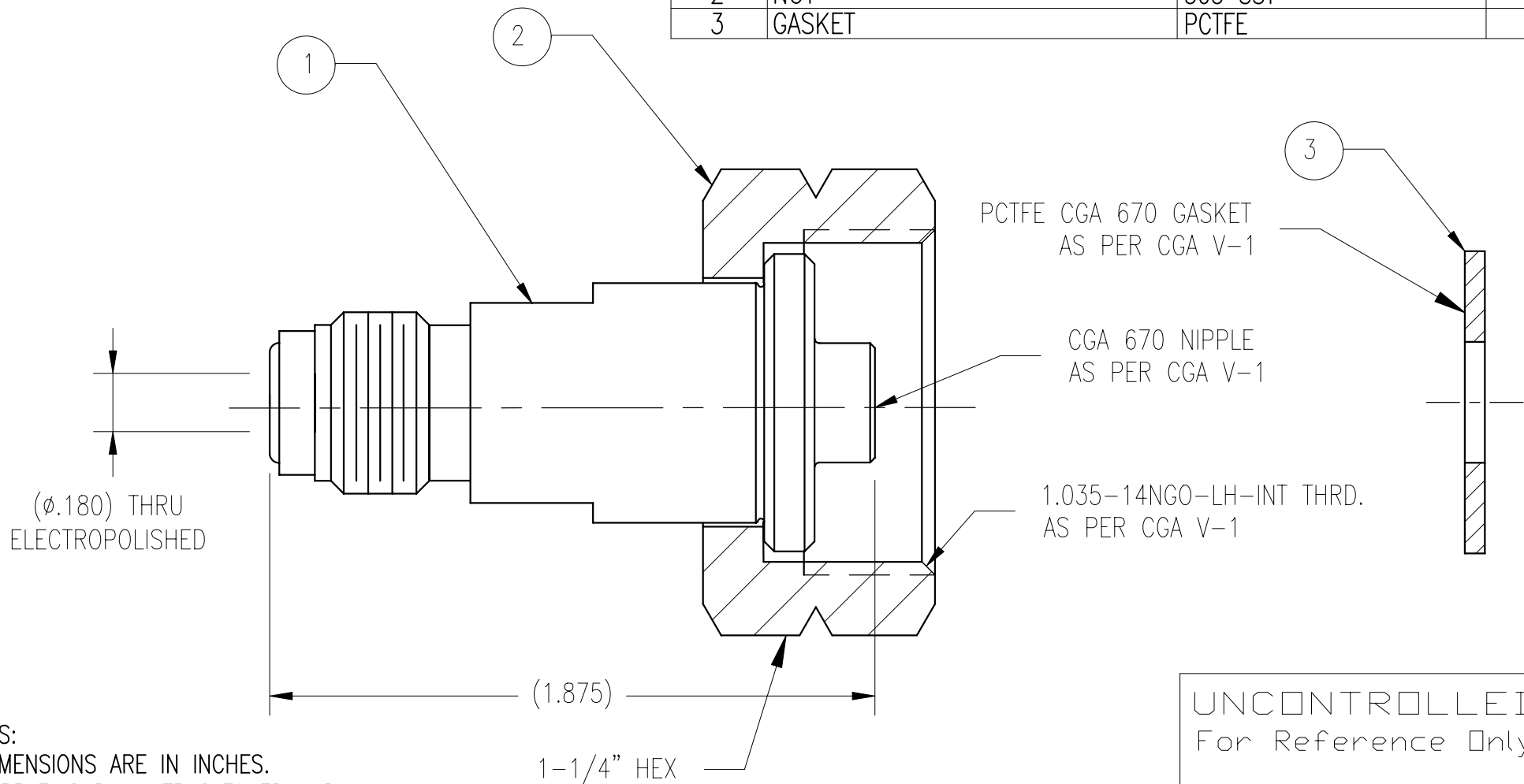


ITEM	PART NAME	MATERIAL	QTY.
1	NIPPLE	316L SST	1
2	NUT	303 SST	1
3	GASKET	PCTFE	1



#### NOTES:

1. DIMENSIONS ARE IN INCHES.
2. NIPPLE IS D.I. ULTRACLEANED AND DOUBLE BAGGED.
3. NUT IS CLEANED FOR OXYGEN SERVICE AND SINGLE BAGGED.
4. ASSEMBLY IS BULK BAGGED AND LABELED WITH GFP LOGO AND GFP PART NUMBER.

MAT'L: SEE BOM

DWN: FAS

SCALE: NTS

SHT.: 1 of 1

DATE: 10/11/12

*GasFlo Products Inc.*  
*Fairfield, N.J.*

SALES DRAWING-INLET CONNECTION  
CGA 670 x 1/4" MALE FACE SEAL  
ELECTROPOLISHED

DWG: SALES-INL-670SS-4MFS-P