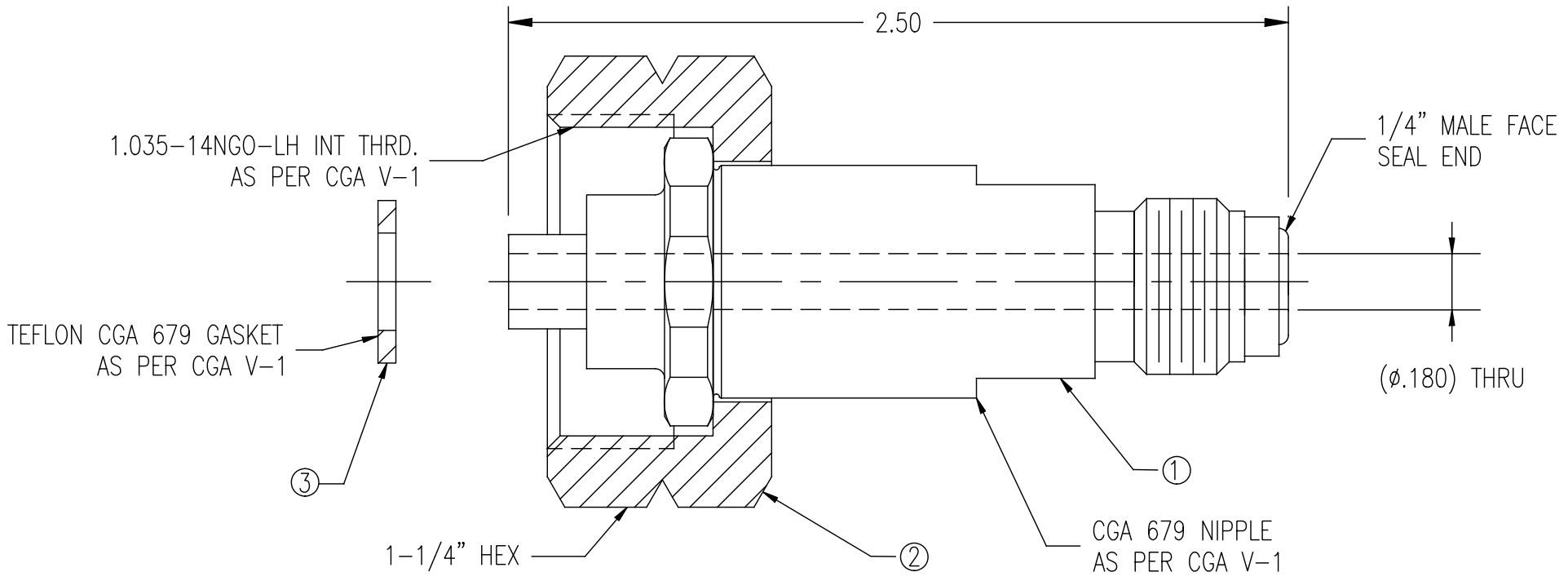


UNCONTROLLED
For Reference Only
FAS 6/12/2013

ITEM	PART NAME	MATERIAL	QTY
1	NIPPLE	316L SST	1
2	NUT	303 SST	1
3	GASKET	TEFLON	1



- NOTES:
1. DIMENSIONS ARE IN INCHES
 2. NIPPLE IS ULTRASONICALLY D.I. CLEANED AND SINGLE BAGGED.
 3. NUT IS CLEANED FOR OXYGEN SERVICE AND SINGLE BAGGED.

GasFlo Products Inc.
Fairfield, N.J.

SALES DRAWING – INLET CONNECTION
INLET CGA 679 x 1/4 MFS, SST

THIS DOCUMENT CONTAINS INFORMATION THAT IS THE PROPRIETARY AND CONFIDENTIAL PROPERTY OF GASFLO PRODUCTS INC. AND MAY BE USED ONLY FOR AUTHORIZED PURPOSES.
THIS DOCUMENT MAY NOT BE REPRODUCED WITHOUT GASFLO PRODUCTS INC. PRIOR WRITTEN CONSENT.

MAT'L SEE B.O.M.	
DWN FAS	SCALE: NTS
APPVD	DATE 6/12/13

DWG SALES-INL-679SS-4MFS-40