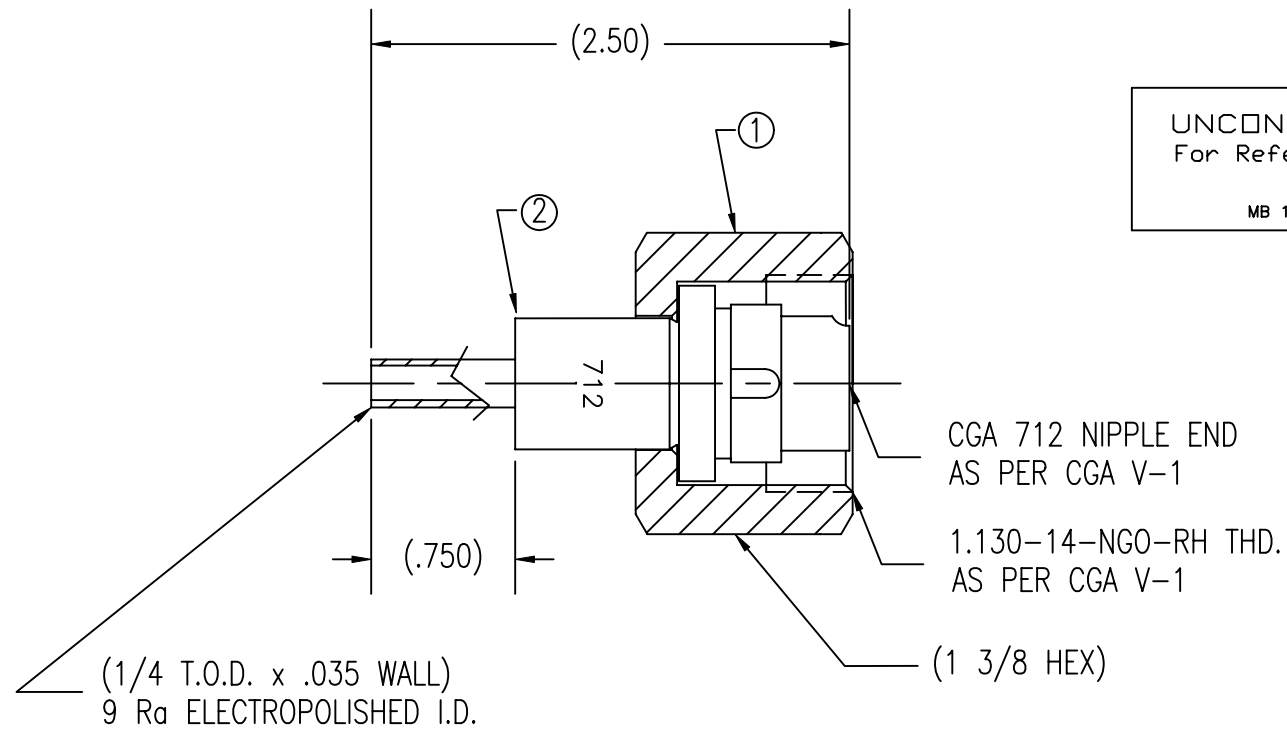


ITEM	PART NAME	MATERIAL	QTY
1	NUT	303 SST	1
2	NIPPLE	316L VIM/VAR SST	1



UNCONTROLLED
For Reference Only
MB 10/5/2011

NOTES:

1. NUT THREADS ARE SILVER PLATED.
2. ORDER PART NUMBER: INL-712SS-4TS.
3. NIPPLE IS D.I. ULTRACLEANED, NYLON INNER BAGGED AND POLY OUTER BAGGED.
4. NUT IS CLEANED FOR OXYGEN SERVICE AND SINGLE POLY BAGGED.
5. ASSEMBLY IS BULK POLY BAGGED AND LABELED WITH GFP LOGO AND GFP PART NUMBER.

GasFlo Products Inc.
Fairfield, N.J.

SALES DRAWING- INLET CONNECTION
CGA 712 x 1/4" TUBE STUB