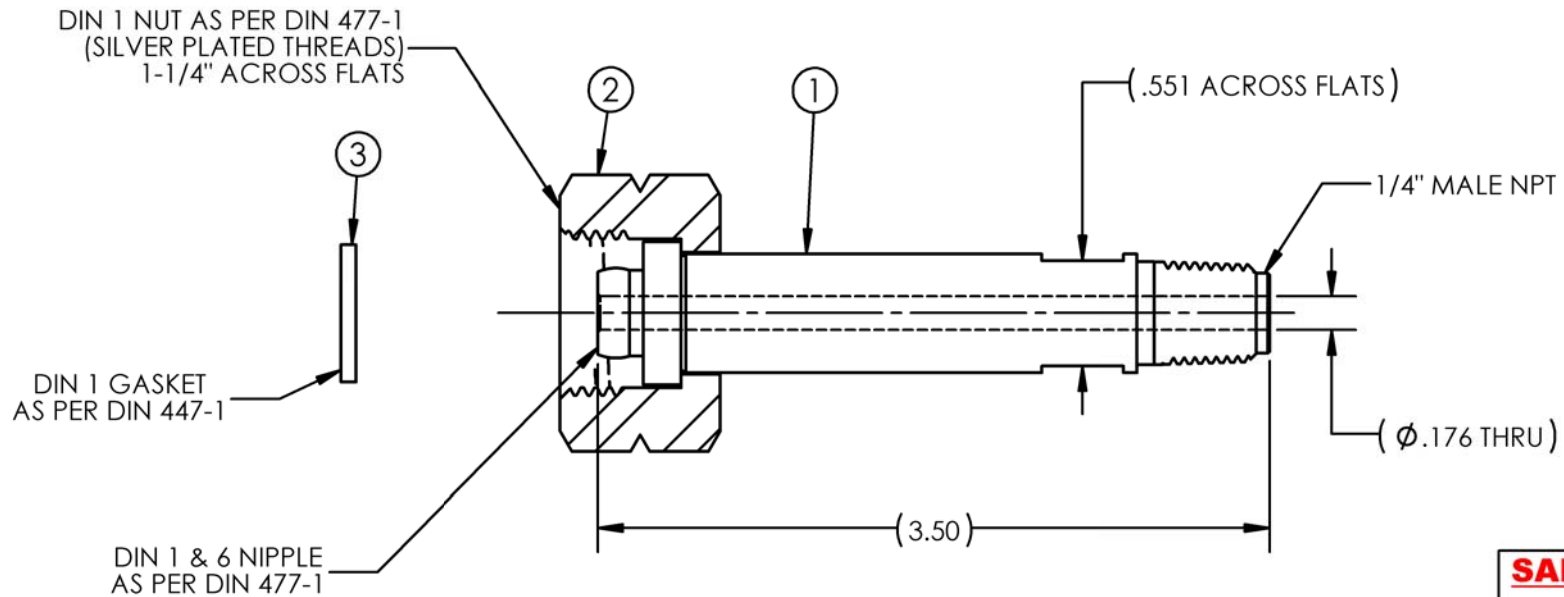
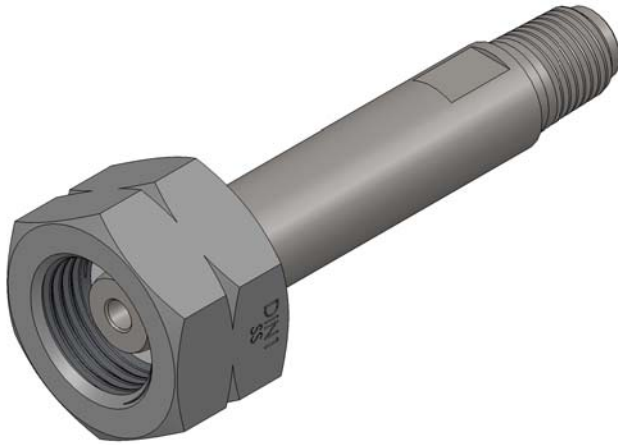


| ITEM | PART NAME | MATERIAL | QTY. |
|------|-----------|----------|------|
| 1 | NIPPLE | 316L SST | 1 |
| 2 | NUT | 303 SST | 1 |
| 3 | GASKET | PTFE | 1 |



SALES DRAWING
UNCONTROLLED
FOR
REFERENCE
ONLY

- NOTES:
1. DIMENSIONS ARE IN INCHES.
2. ALL COMPONENTS ARE SINGLE POLY BAGGED. ASSEMBLY IS BULK POLY BAGGED AND LABELED WITH GFP LOGO, PART NUMBER, "CLEANED FOR OXYGEN SERVICE" AND "MADE IN THE USA".

| REV | CURRENT REVISION | DATE |
|-----|-------------------------------------|------------|
| A | ESTABLISH GFP DRAWING FOR THIS ITEM | 08/17/2017 |

| | | |
|--------------------------------|------------|-----------------------------------|
| DESCRIPTION: | | |
| INLET DIN 1 X 1/4 MNPT 3.50 SS | | |
| PART NUMBER: | | |
| INL-D1SS-4M-56 | | |
| SIZE: A | SCALE: NTS | MAT'L: SEE B.O.M. |
| SHEET NUMBER: 1 OF 1 | | DRAWN BY: BMugavero on 08/17/2017 |



THIS DOCUMENT CONTAINS INFORMATION THAT IS THE PROPRIETARY AND CONFIDENTIAL PROPERTY OF GASFLO PRODUCTS INC. AND MAY BE USED ONLY FOR AUTHORIZED PURPOSES. THIS DOCUMENT MAY NOT BE REPRODUCED WITHOUT GASFLO PRODUCTS INC. PRIOR WRITTEN CONSENT.

APPR: mbojck on 08/18/2017