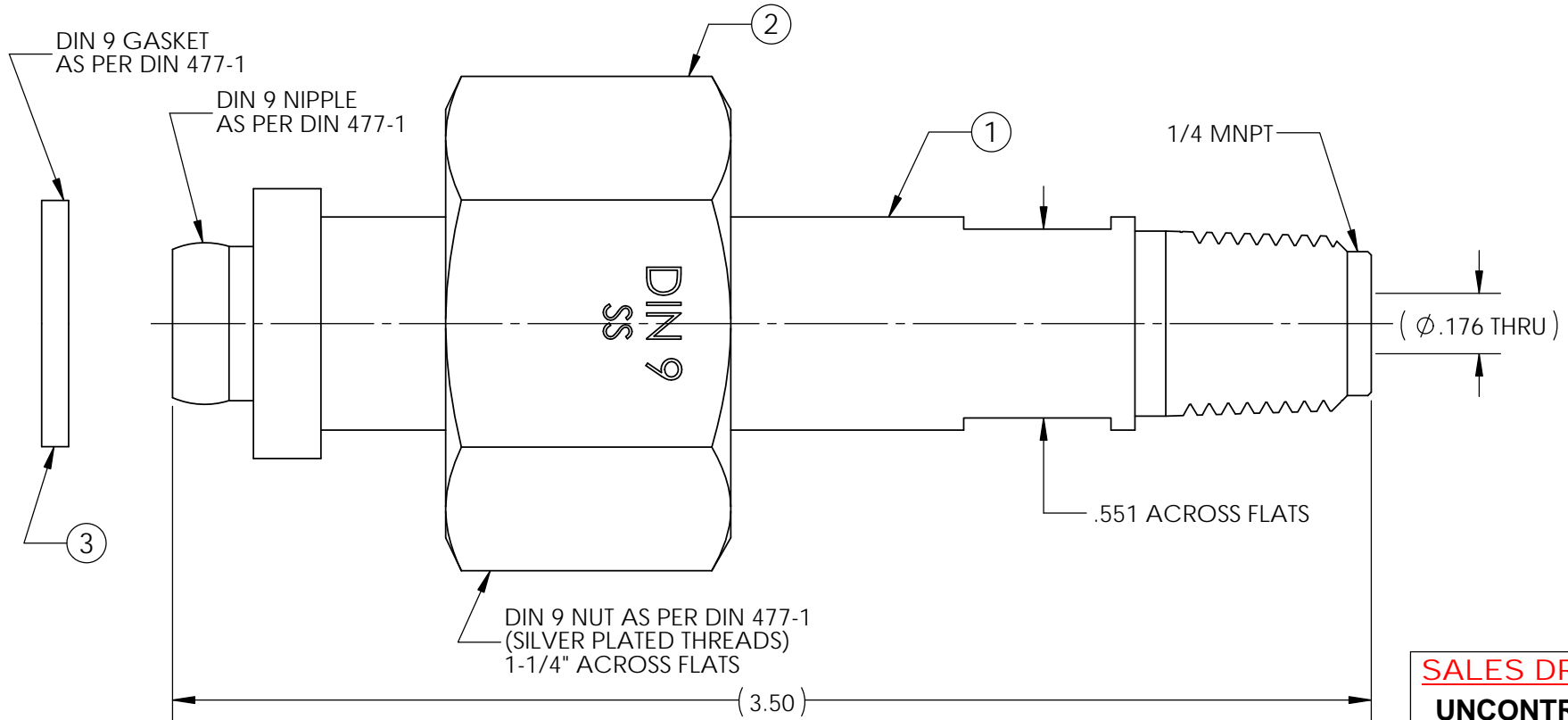


SCALE 1 : 2



ITEM	PART NUMBER	MATERIAL	QTY.
1	NIPPLE	316L SST	1
2	NUT	303 SST	1
3	GASKET	PTFE	1

NOTES:

1. DIMENSIONS ARE IN INCHES.
2. NIPPLE, NUT, AND GASKET ARE CLEANED FOR OXYGEN SERVICE AND SINGLE POLY BAGGED.
3. IN STOCKROOM, SINGLE POLY BAG NIPPLE, NUT, AND GASKET. LABEL BAG WITH GFP LOGO, PART NUMBER, "CLEANED FOR OXYGEN SERVICE", AND "MADE IN THE USA".

SALES DRAWING
UNCONTROLLED
FOR
REFERENCE
ONLY

REV	CURRENT REVISION	DATE
A	ROTATED IMAGE 180°; UPDATED DIN 9 NUT INFORMATION	08/19/2015

DESCRIPTION: INLET DIN 9 X 1/4 MNPT 3.50 SS		
PART NUMBER: INL-D9SS-4M-56		
SIZE: A	SCALE: NTS	MAT'L: SEE B.O.M.
SHEET NUMBER: 1 OF 1		DRAWN BY: BMugavero on 08/19/2015



THIS DOCUMENT CONTAINS INFORMATION THAT IS THE PROPRIETARY AND CONFIDENTIAL PROPERTY OF GASFLO PRODUCTS INC. AND MAY BE USED ONLY FOR AUTHORIZED PURPOSES. THIS DOCUMENT MAY NOT BE REPRODUCED WITHOUT GASFLO PRODUCTS INC. PRIOR WRITTEN CONSENT.

APPR: mbojcik on 08/25/2015