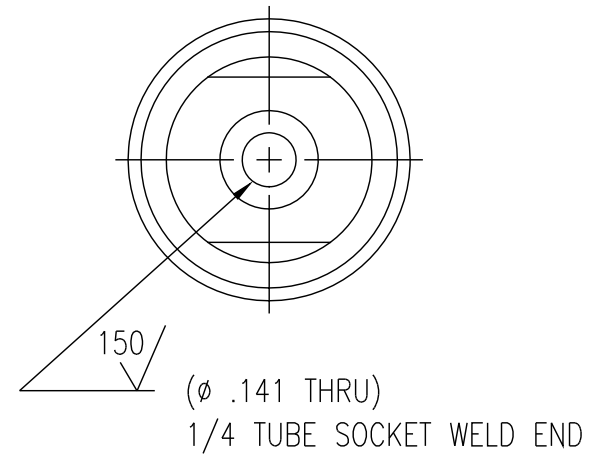
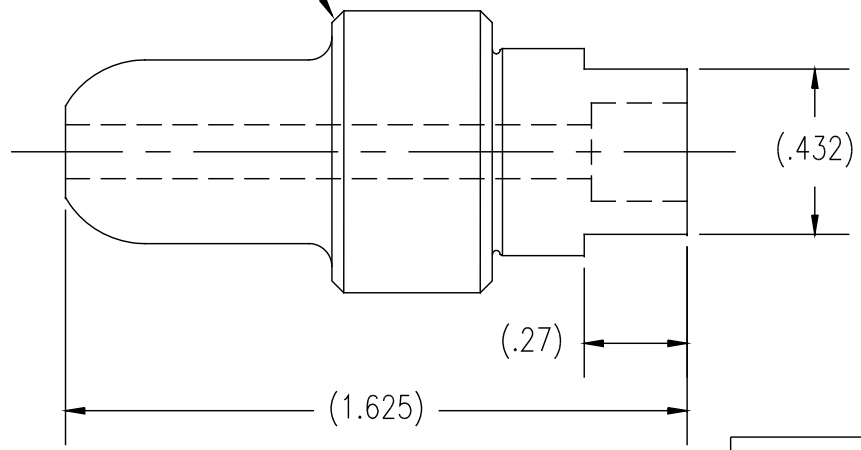


NO. 347 NIPPLE END PER CGA V-1



UNCONTROLLED  
For Reference Only  
MB 5/3/2012

- NOTES:
1. DIMENSIONS ARE IN INCHES.
  2. EDGES BROKEN 45° x .003-.010.
  3. BURRS REMOVED.
  4. CLEANED FOR OXYGEN SERVICE.
  5. SINGLE POLY BAGGED. BAG LABELED WITH GFP LOGO, PART NUMBER, "CLEANED FOR OXYGEN SERVICE", & MADE IN THE USA".

*GasFlo Products Inc.*  
*Fairfield, N.J.*

SALES DWG.- NIPPLE X 1/4" SOCKET WELD  
CGA 347; 316L SST; W/ WRENCH FLATS

THIS DOCUMENT CONTAINS INFORMATION THAT IS THE PROPRIETARY AND CONFIDENTIAL PROPERTY OF GASFLO PRODUCTS INC. AND MAY BE USED ONLY FOR AUTHORIZED PURPOSES. THIS DOCUMENT MAY NOT BE REPRODUCED WITHOUT GASFLO PRODUCTS INC. PRIOR WRITTEN CONSENT.

MAT'L: 316L SST	
DWN: MB	SCALE: NTS
SHT.: 1 of 1	DATE: 5/3/12

DWG: SALES-NIP-347SS-4W-26F