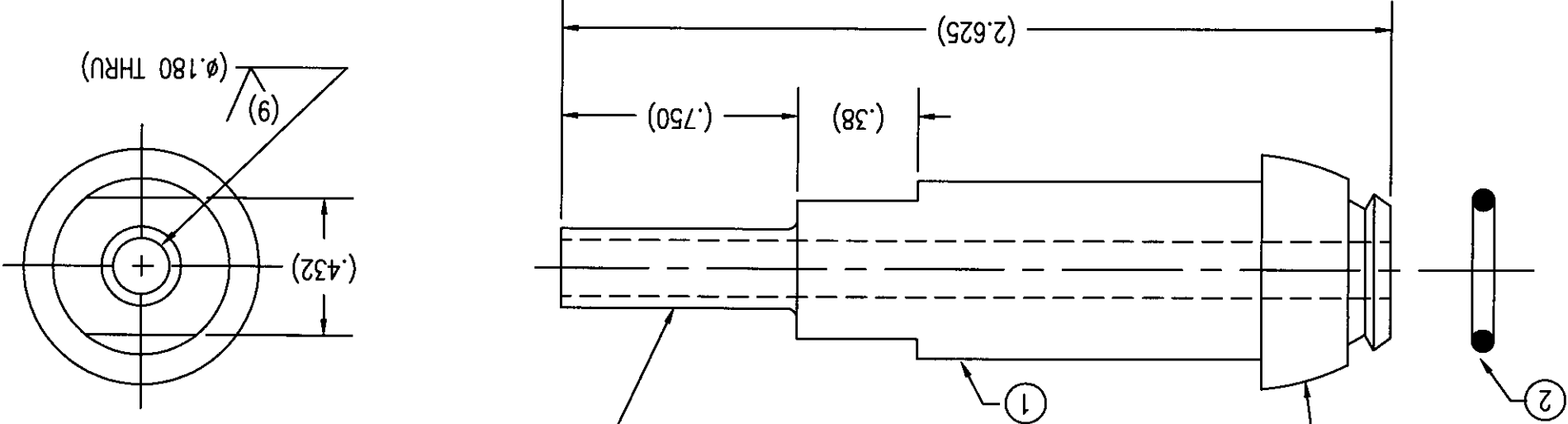


- NOTES:
 1. DIMENSIONS ARE IN INCHES.
 2. ELECTROPOLISHED.
 3. O-RING ASSEMBLED TO NIPPLE PRIOR TO PACKAGING.
 4. D.I. ULTRACLEANED AND PACKAGED.

CGA 510, 580, 590 NIPPLE END AS PER CGA V-1,
 MODIFIED FOR O-RING

UNCONTROLLED
 For Reference Only
 M/S 7/18/2006

1/4" TOD, .035 WALL TUBE STUB



| ITEM | PART NAME | MATERIAL | QTY |
|------|-----------|----------|-----|
| 1 | NIPPLE | 316L SST | 1 |
| 2 | O-RING | WITON | 1 |

GasFlo Products Inc.
Fairfield, N.J.

SALES DRAWING - CGA 510, 580, 590 NIPPLE
 W/ O-RING, ELECTROPOLISHED

DATE: 7/18/06 DWG SALES-NIP-50SS-4TS-42VF-P

THIS DRAWING AND THE INFORMATION THEREON ARE PROPRIETARY AND CONFIDENTIAL PROPERTY
 OF GASFLO PRODUCTS INC. AND MAY BE USED ONLY FOR AUTHORIZED PURPOSES.
 THIS DRAWING MAY NOT BE REPRODUCED WITHOUT GASFLO PRODUCTS INC. PRIOR WRITTEN CONSENT.

MAT'L SEE B.O.M.

DWN MB SCALE: 2:1

APPVD