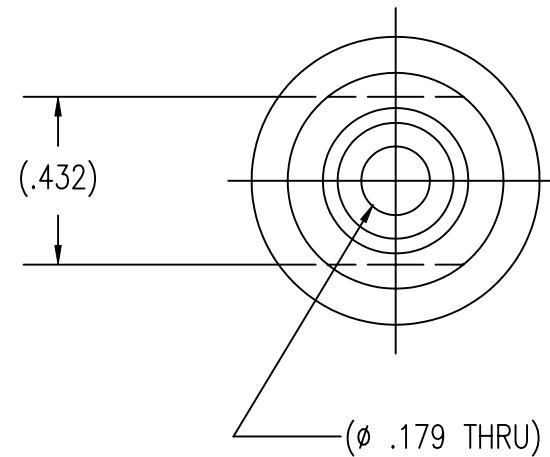
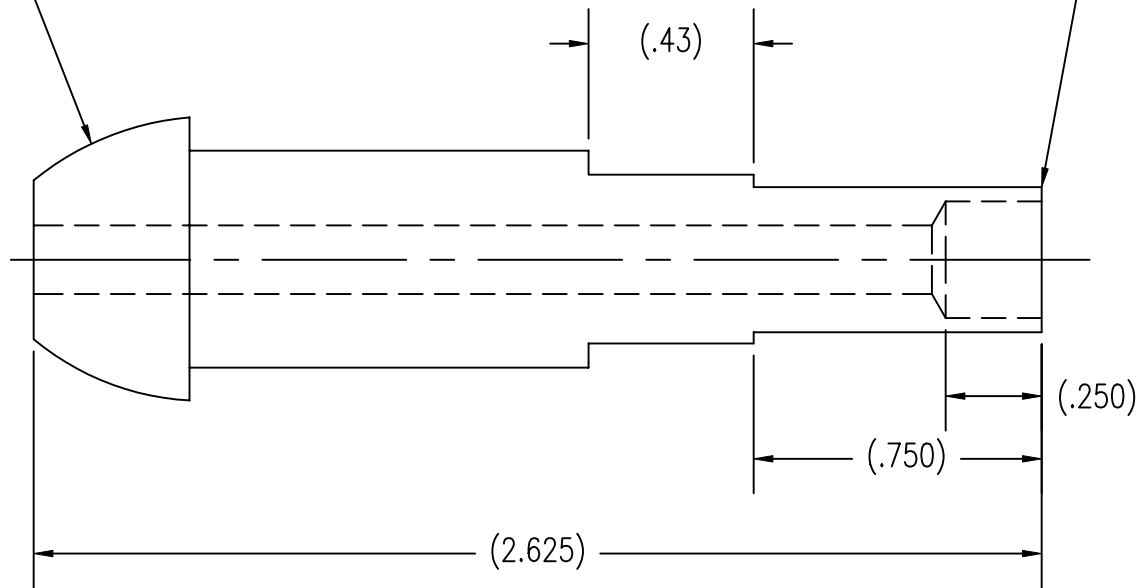


CGA 500, 510, 580, 590 NIPPLE END PER CGA V-1

3/8" TUBE WELD END



UNCONTROLLED  
For Reference Only  
MB 3/30/2007

NOTES:

1. DIMENSIONS ARE IN INCHES.
2. ULTRASONICALLY D.I. CLEANED, SINGLE POLY BAGGED.

*GasFlo Products Inc.*  
*Fairfield, N.J.*  
SALES DWG.- NIPPLE x 3/8" TUBE WELD  
500, 510, 580, 590  
DWG SALES-NIP-50SS-6TS

THIS DRAWING AND THE INFORMATION THEREON ARE PROPRIETARY AND CONFIDENTIAL PROPERTY OF GASFLO PRODUCTS INC. AND MAY BE USED ONLY FOR AUTHORIZED PURPOSES. THIS DRAWING MAY NOT BE REPRODUCED WITHOUT GASFLO PRODUCTS INC. PRIOR WRITTEN CONSENT.

MAT'L 316L SST	
DWN MB	SCALE: NTS
APPVD	DATE 2/12/01