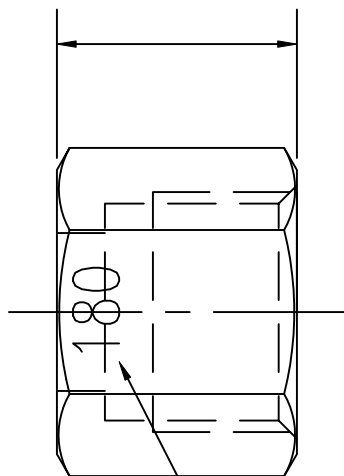
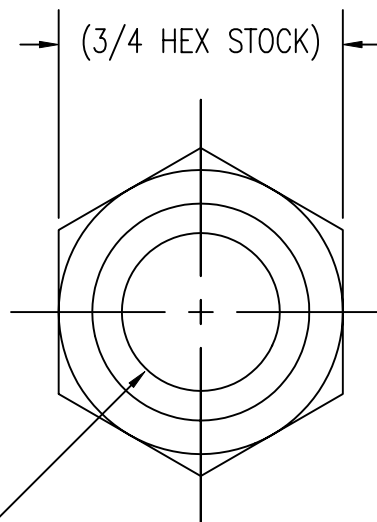


(.625 +.015/-.000)



UNCONTROLLED
For Reference Only

MB 3/30/2007



(Ø.411-.416 THRU)
THREAD AS PER CGA V-1

MARK AS SHOWN:
2MM HIGH "180"
MARKING MUST BE PERMANENT

NOTES:

1. DIMENSIONS ARE IN INCHES.

GasFlo Products Inc.
Fairfield, N.J.

SALES DWG.- CGA 180 NUT

MAT'L: 303 SST

DWN: MB

SCALE: NTS

APPVD:

DATE: 12/2/97

DWG: SALES-NUT-180SS