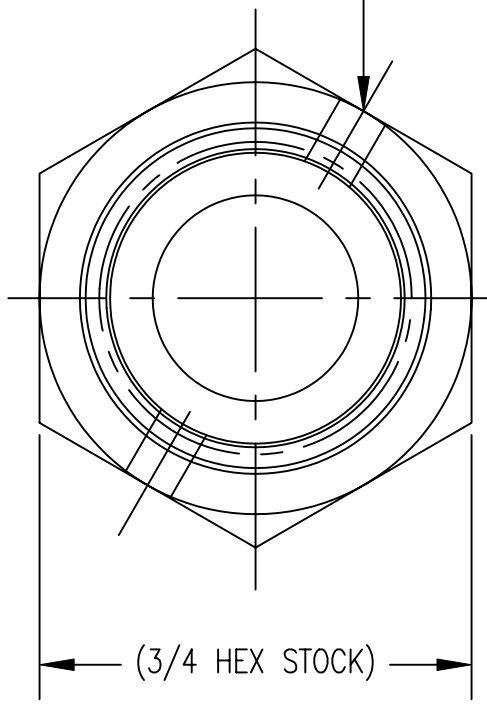
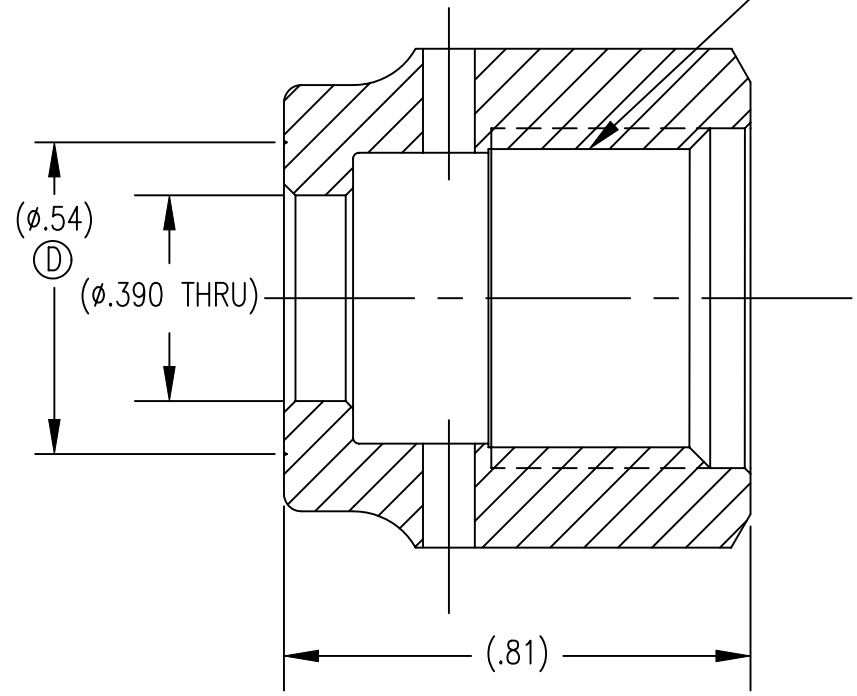


(.09 2 PLACES 180° APART)

(9/16-18UNF-2B)



NOTES:

1. DIMENSIONS ARE IN INCHES.
2. THREADS ARE SILVER PLATED.
3. ITEMS ARE CLEANED FOR OXYGEN SERVICE.
4. EACH ITEM IS INDIVIDUALLY POLY BAGGED.

UNCONTROLLED  
 FOR REFERENCE  
 ONLY  
 MB 5/10/2000

*GasFlo Products Inc.*  
*Fairfield, N.J.*

REV	DESCRIPTION	DATE
D	REDRAWN, ADDED HIGH-FLOW ID GROOVE WHERE SHOWN	2/20/2007

THIS DOCUMENT CONTAINS INFORMATION THAT IS THE PROPRIETARY AND CONFIDENTIAL PROPERTY OF GASFLO PRODUCTS INC. AND MAY BE USED ONLY FOR AUTHORIZED PURPOSES. THIS DOCUMENT MAY NOT BE REPRODUCED WITHOUT GASFLO PRODUCTS INC. PRIOR WRITTEN CONSENT.

MAT'L 303 SST  
 DWN MB SCALE: NTS  
 APPVD DATE 5/10/00

SALES DRAWING- FEMALE NUT  
 1/4" FACE SEAL- HIGH FLOW  
 DWG SALES-NUT-4SS-FFS-HF REV. D