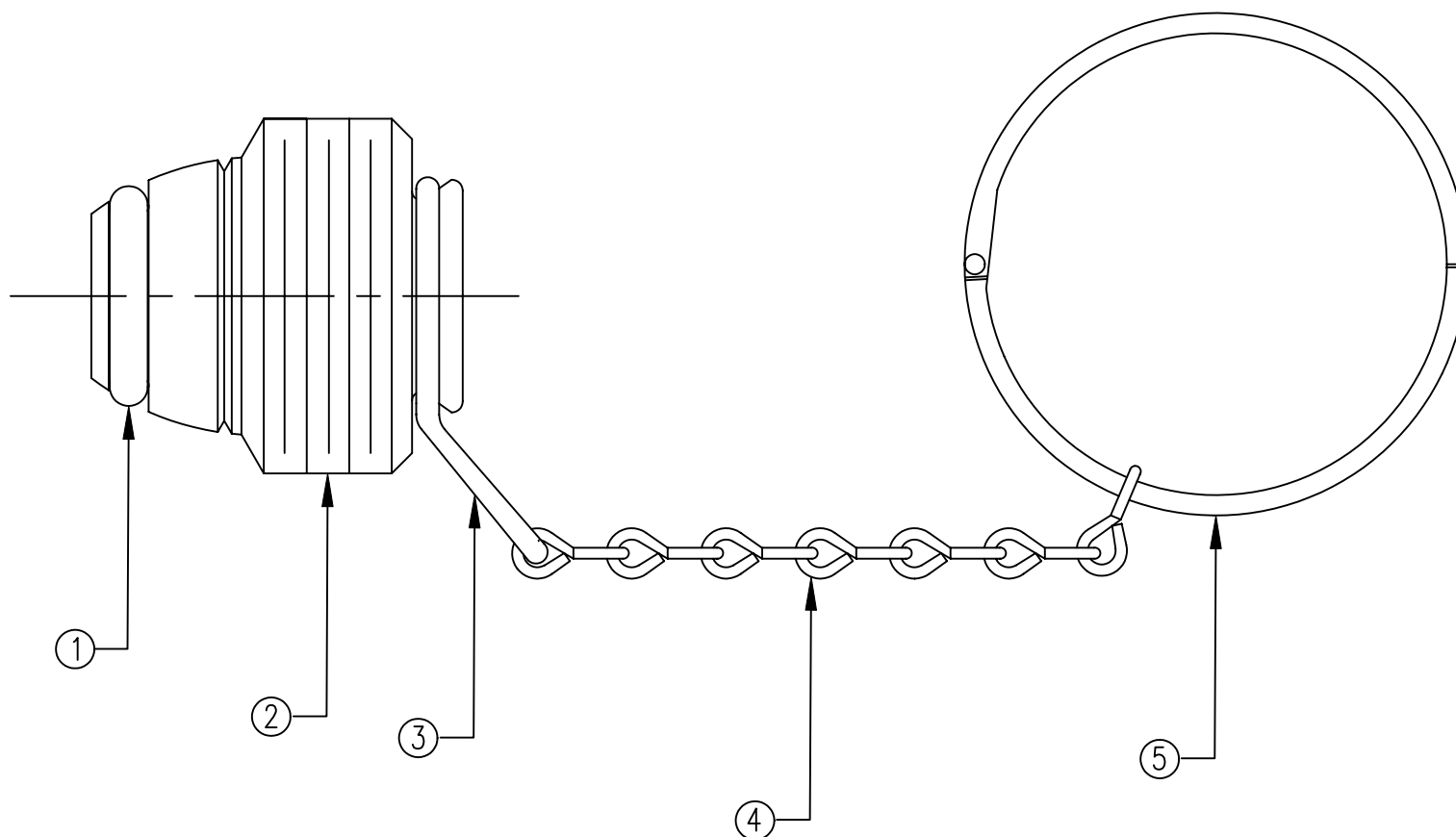


ITEM	PART NAME	MATERIAL	QTY
1	O-RING	BUNA-N	1
2	PLUG	BRASS	1
3	CLIP RING	BRASS	1
4	CHAIN	BRASS	1
5	LATCH RING	CHROME PLATED STEEL	1



NOTES:

1. SINGLE POLY BAGGED, EACH BAG LABELLED WITH GFP LOGO, PART NUMBER, AND "CLEANED FOR OXYGEN SERVICE".

UNCONTROLLED
For Reference Only

MB 3/30/2007

GasFlo Products Inc.
Fairfield, N.J.

SALES DWG.- GAS TIGHT PLUG ASSEMBLY
CGA 580 WITH BUNA-N O-RING & CHAIN

THIS DRAWING AND THE INFORMATION THEREON ARE PROPRIETARY AND CONFIDENTIAL PROPERTY OF GASFLO PRODUCTS INC. AND MAY BE USED ONLY FOR AUTHORIZED PURPOSES.
THIS DRAWING MAY NOT BE REPRODUCED WITHOUT GASFLO PRODUCTS INC. PRIOR WRITTEN CONSENT.

DWN: MB

SCALE: NTS

APPVD:

DATE: 9/7/04

DWG: SALES-PLU-580BR-R