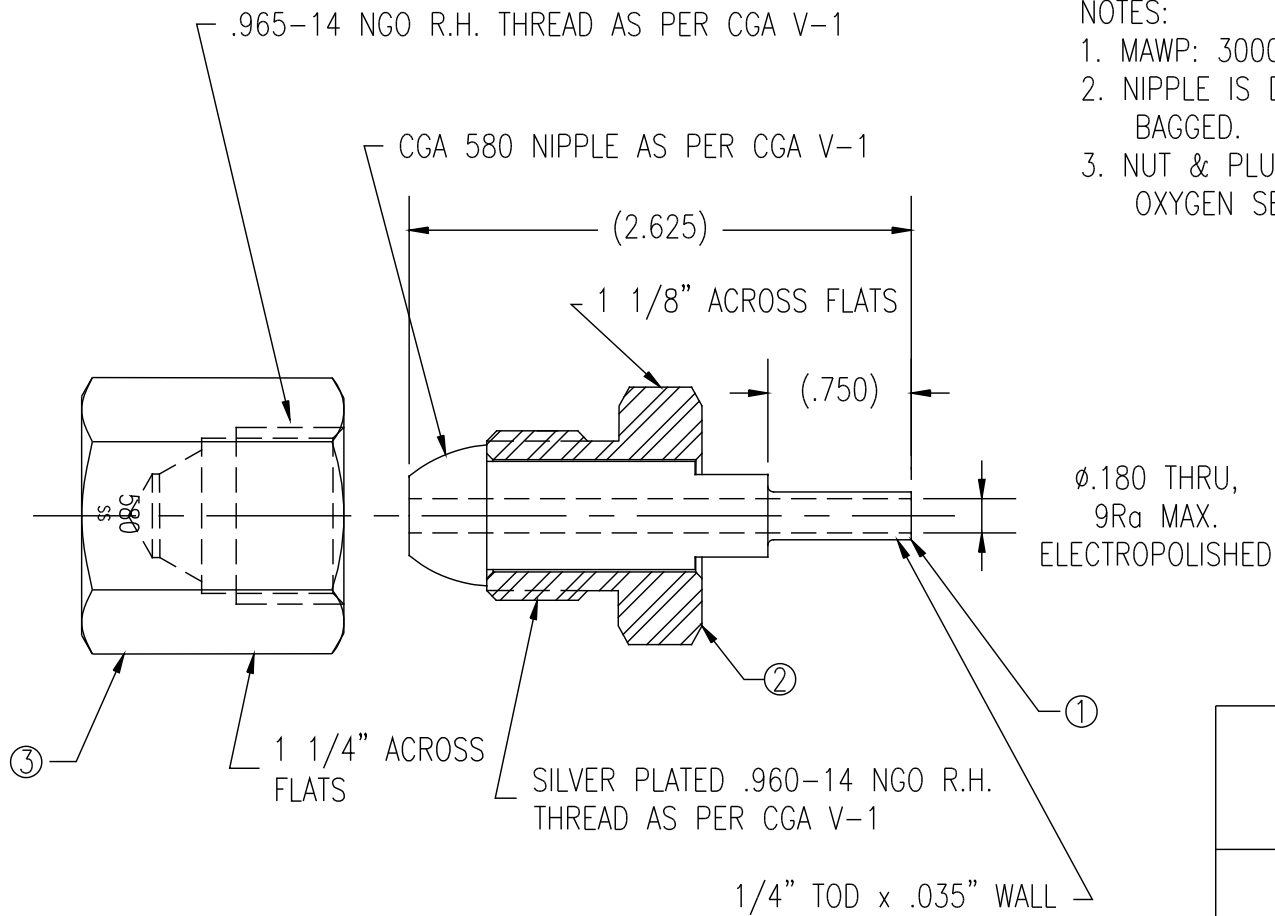


ITEM	COMPONENT NAME	MATERIAL	COMPONENT PN	QTY
1	NIPPLE	316L SST	NIP-50SS-4TS-P	1
2	NUT	303 SST	NUT-580SS-SP	1
3	PLUG	303 SST	AD-580FSS-BL	1



- NOTES:
1. MAWP: 3000 PSI
 2. NIPPLE IS D.I. ULTRACLEANED AND DOUBLE BAGGED.
 3. NUT & PLUG ARE CLEANED FOR OXYGEN SERVICE AND SINGLE BAGGED.

UNCONTROLLED
For Reference Only
MB 7/16/2013

GasFlo Products Inc.
Fairfield, N.J.

SALES DWG.- CGA PIGTAIL CONNECTION
SST # 580 x 1/4" TUBE ELECTROPOLISHED

DWG: SALES-PT-580SS-4TS-P

THIS DOCUMENT CONTAINS INFORMATION THAT IS THE PROPRIETARY AND CONFIDENTIAL PROPERTY OF GASFLO PRODUCTS INC. AND MAY BE USED ONLY FOR AUTHORIZED PURPOSES. THIS DOCUMENT MAY NOT BE REPRODUCED WITHOUT GASFLO PRODUCTS INC. PRIOR WRITTEN CONSENT.

DWN: MB
APPVD:
SCALE: NTS
DATE: 7/16/13