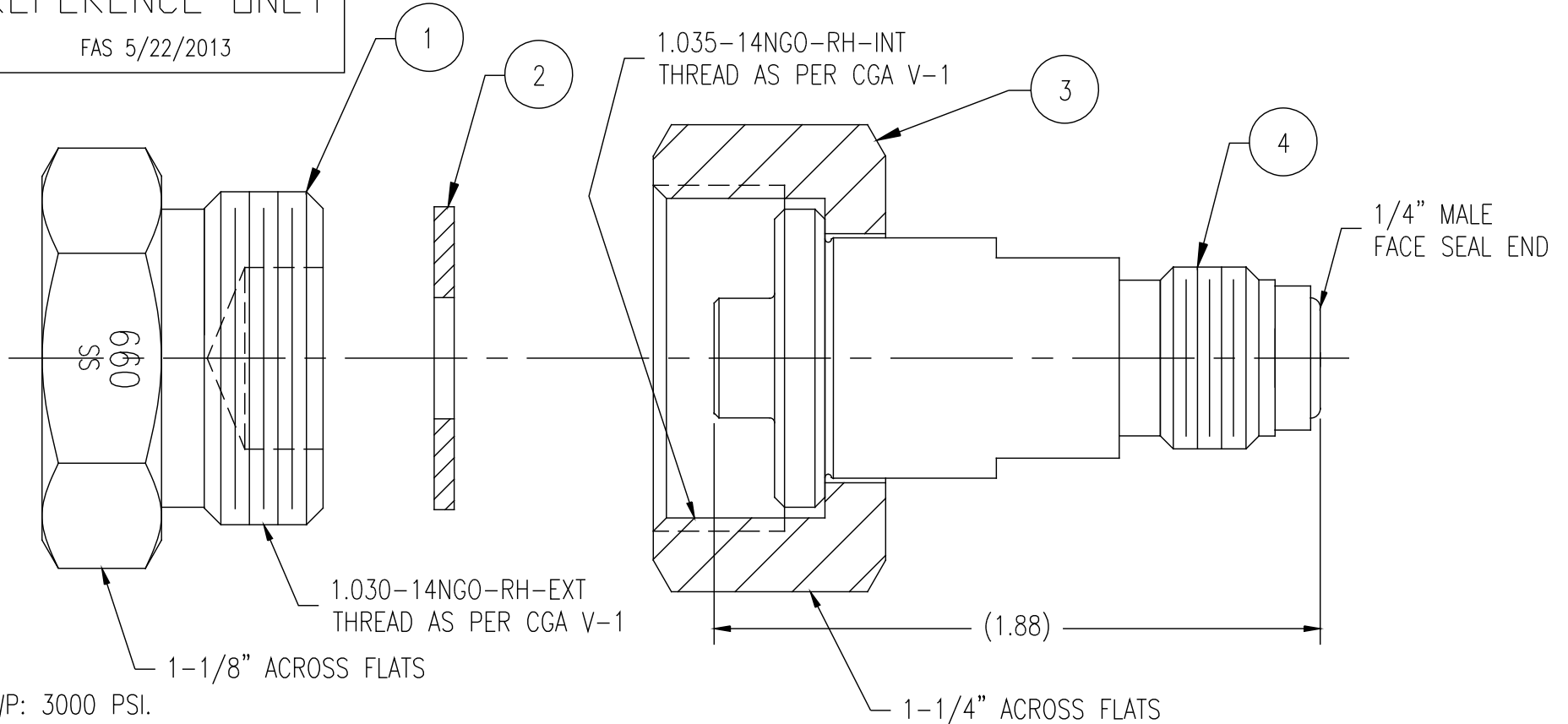


UNCONTROLLED
FOR
REFERENCE ONLY
FAS 5/22/2013

ITEM	PART NAME	MATERIAL	QTY
1	ADAPTER, BLANK	303 SST	1
2	GASKET	PCTFE (NEOFLON)	1
3	NUT	303 SST	1
4	NIPPLE	316L SST	1



NOTES:

1. MAWP: 3000 PSI.
2. NIPPLE IS D.I. ULTRACLEANED AND DOUBLE BAGGED.
3. NUT, PLUG AND GASKET ARE CLEANED FOR OXYGEN SERVICE AND SINGLE BAGGED.

GasFlo Products Inc.
Fairfield, N.J.

SALES DRAWING, PIGTAIL CGA 660
x 1/4 MALE FACE SEAL 1.875" EP SS

THIS DOCUMENT CONTAINS INFORMATION THAT IS THE PROPRIETARY AND CONFIDENTIAL PROPERTY OF GASFLO PRODUCTS INC. AND MAY BE USED ONLY FOR AUTHORIZED PURPOSES.
THIS DOCUMENT MAY NOT BE REPRODUCED WITHOUT GASFLO PRODUCTS INC. PRIOR WRITTEN CONSENT.

MAT'L: SEE BOM	
DWN: FAS	SCALE: NTS
APPVD:	DATE: 5/22/13

DWG: SALES-PT-660SS-4MFS-P