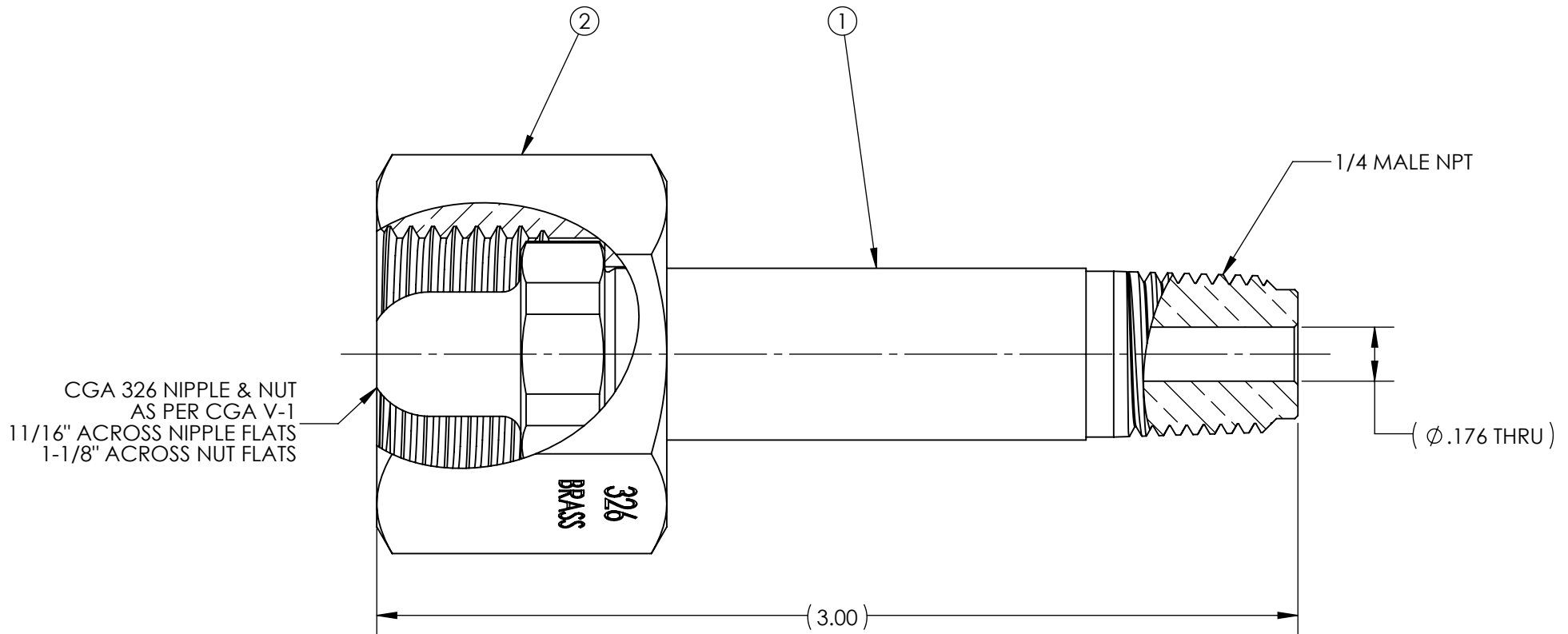


ITEM	PART NAME	MATERIAL	QTY.
1	NIPPLE	PLATED BRASS	1
2	NUT	PLATED BRASS	1



**SALES DRAWING**  
**UNCONTROLLED**  
**FOR**  
**REFERENCE**  
**ONLY**

- NOTES:
1. DIMENSIONS ARE IN INCHES.
  2. ALL ITEMS ARE CLEANED FOR OXYGEN SERVICE AND SINGLE POLY BAGGED.
  3. SINGLE POLY BAG NIPPLE AND NUT. LABEL BAG WITH GFP LOGO, PART NUMBER, "CLEANED FOR OXYGEN SERVICE", AND "MADE IN THE USA".

REV	CURRENT REVISION	DATE
A	ESTABLISH GFP SALES DRAWING FOR THIS ITEM	01/13/2022

DESCRIPTION: <b>INLET CGA 326 X 1/4 MNPT 3.00 CH</b>		
PART NUMBER: <b>INL-326CH-4M-48</b>		



THIS DOCUMENT CONTAINS INFORMATION THAT IS THE PROPRIETARY AND CONFIDENTIAL PROPERTY OF GASFLO PRODUCTS INC. AND MAY BE USED ONLY FOR AUTHORIZED PURPOSES. THIS DOCUMENT MAY NOT BE REPRODUCED WITHOUT GASFLO PRODUCTS INC. PRIOR WRITTEN CONSENT.

SIZE: A	SCALE: NTS	MAT'L: SEE B.O.M.
SHEET NUMBER: 1 OF 1		DRAWN BY: mbojck on 01/13/2022

APPR: mbojck on 01/13/2022