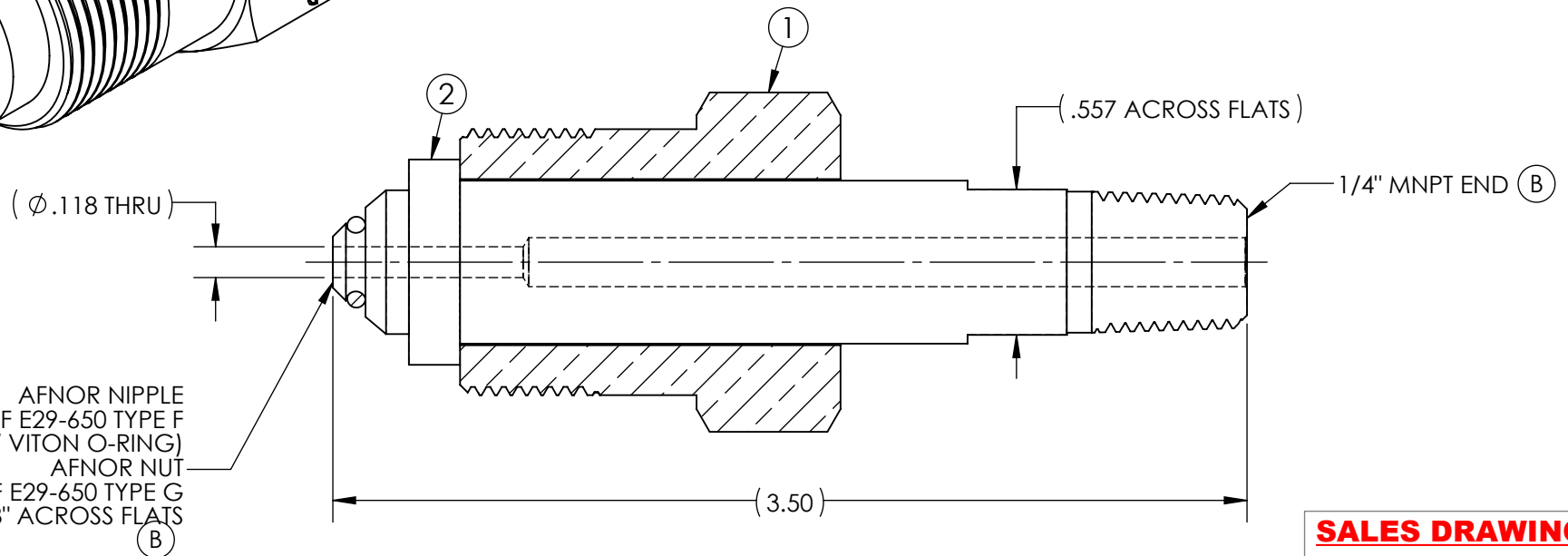
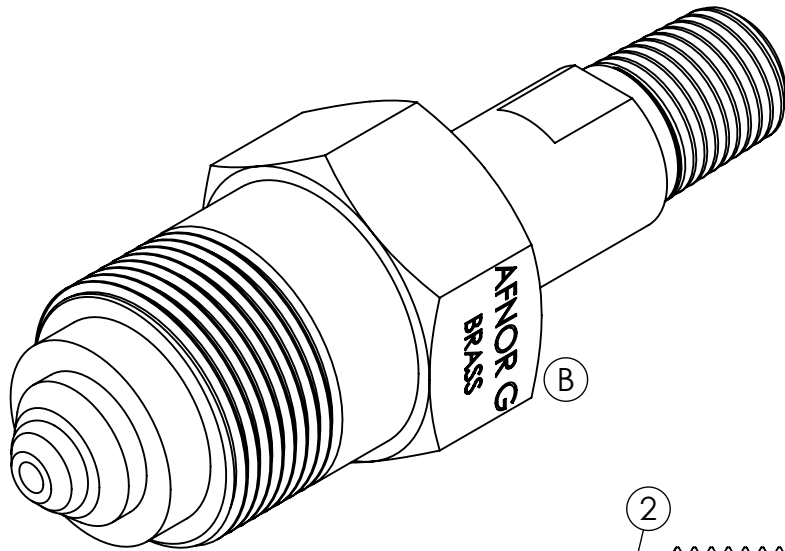


ITEM	PART NAME	MATERIAL	QTY.
1	NUT	PLATED BRASS CDA-360	1
2	NIPPLE	PLATED BRASS CDA-360	1



AFNOR NIPPLE
AS PER NF E29-650 TYPE F
(W/ VITON O-RING)
AFNOR NUT
AS PER NF E29-650 TYPE G
1-1/8" ACROSS FLATS
(B)

SALES DRAWING
UNCONTROLLED
FOR
REFERENCE
ONLY

NOTES:

1. DIMENSIONS ARE IN INCHES.
2. MAWP: 3000 PSI
3. ALL COMPONENTS ARE SINGLE POLY BAGGED. ASSEMBLY IS BULK POLY BAGGED AND LABELED WITH GFP LOGO, PART NUMBER, "CLEANED FOR OXYGEN SERVICE", AND "MADE IN THE USA".

REV	CURRENT REVISION	DATE
A	REDRAWN PER CURRENT GASFLO SALES DRAWING STANDARDS; ADDED ISOMETRIC VIEW	02/04/2022

DESCRIPTION:	INLET AFNOR G X 1/4 MNPT 3.50 CH
PART NUMBER:	INL-AFNORGCH-4M-56



THIS DOCUMENT CONTAINS INFORMATION THAT IS THE PROPRIETARY AND CONFIDENTIAL PROPERTY OF GASFLO PRODUCTS INC. AND MAY BE USED ONLY FOR AUTHORIZED PURPOSES. THIS DOCUMENT MAY NOT BE REPRODUCED WITHOUT GASFLO PRODUCTS INC. PRIOR WRITTEN CONSENT.

SIZE: A	SCALE: NTS	MAT'L: SEE B.O.M.
SHEET NUMBER: 1 OF 1	DRAWN BY: EIntern4 on 03/10/2015	APPR: mbojcik on 02/04/2022