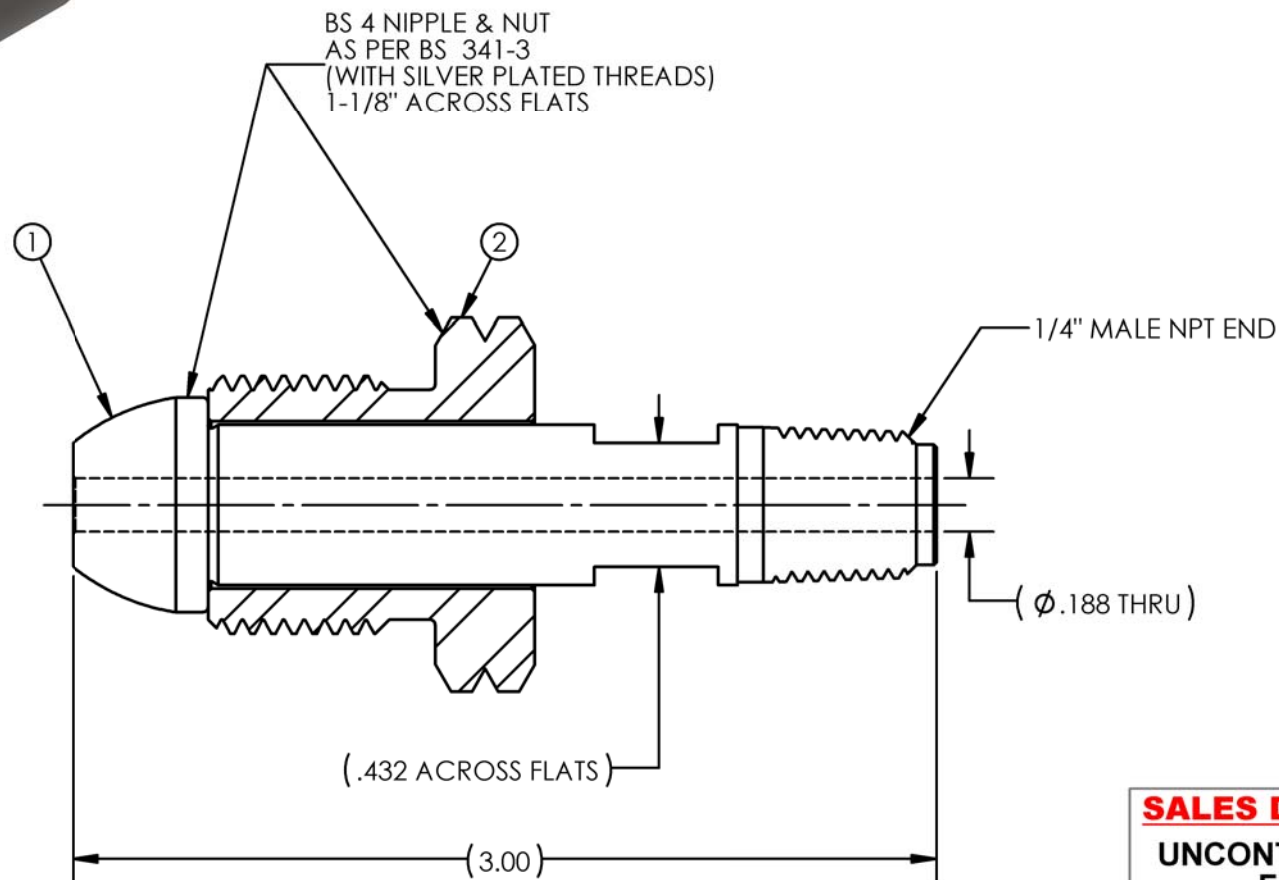


ITEM	PART NAME	MATERIAL	QTY.
1	NIPPLE	316L SST	1
2	NUT	303 SST	1




NOTES:

1. DIMENSIONS ARE IN INCHES.
2. NIPPLE AND NUT ARE CLEANED FOR OXYGEN SERVICE AND SINGLE POLY BAGGED.
3. ALL COMPONENTS ARE SINGLE POLY BAGGED. ASSEMBLY IS BULK POLY BAGGED AND LABELED WITH GFP LOGO, PART NUMBER, "CLEANED FOR OXYGEN SERVICE", AND "MADE IN THE USA".

SALES DRAWING
UNCONTROLLED
FOR
REFERENCE
ONLY

REV	CURRENT REVISION	DATE
A	ESTABLISH GFP SALES DRAWING FOR THIS ITEM	02/07/2019

DESCRIPTION:			 GASFLO PRODUCTS Fairfield, NJ 07004
INLET BS4 X 1/4 MNPT 3.00 SS			
PART NUMBER:			
INL-BS4SS-4M-48F			
SIZE: A	SCALE: NTS	MAT'L: SEE B.O.M.	
SHEET NUMBER: 1 OF 1		DRAWN BY: mbojcik on 02/07/2019	APPR: mbojcik on 02/08/2019

THIS DOCUMENT CONTAINS INFORMATION THAT IS THE PROPRIETARY AND CONFIDENTIAL PROPERTY OF GASFLO PRODUCTS INC. AND MAY BE USED ONLY FOR AUTHORIZED PURPOSES. THIS DOCUMENT MAY NOT BE REPRODUCED WITHOUT GASFLO PRODUCTS INC. PRIOR WRITTEN CONSENT.