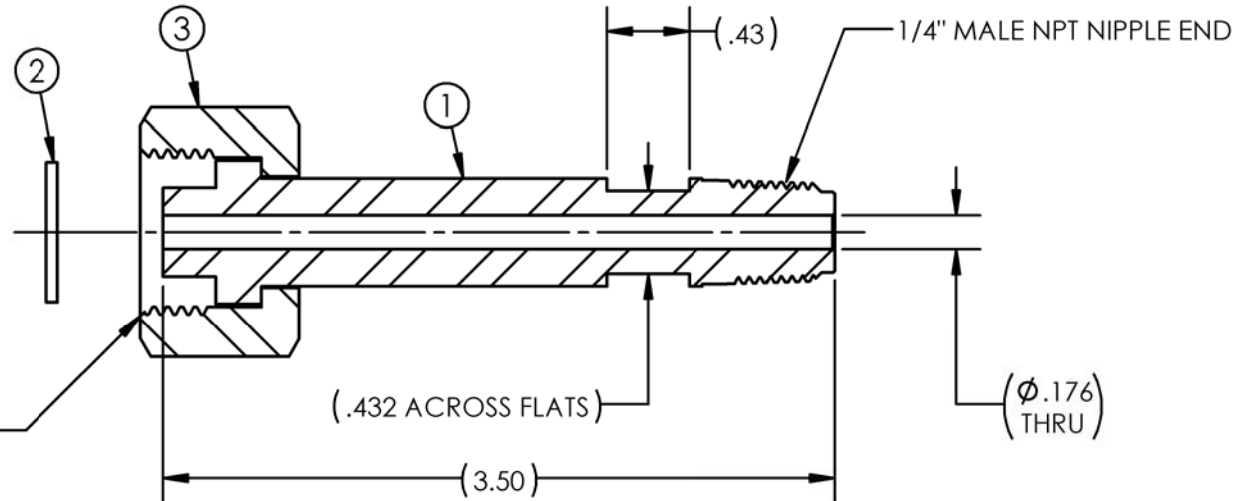
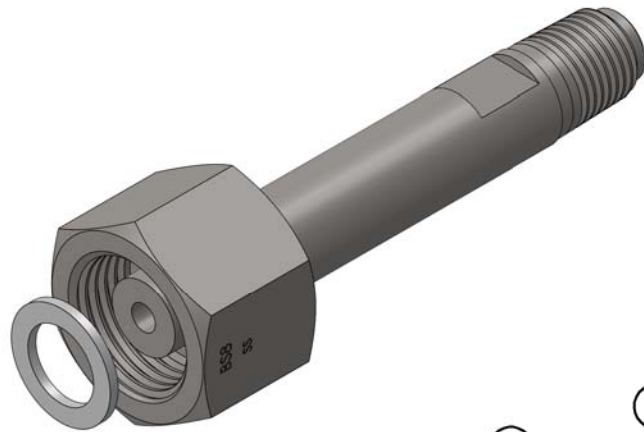


ITEM	DESCRIPTION	MATERIAL	QTY.
1	NIPPLE, BS8 x 1/4" MNPT	316L SST	1
2	GASKET, BS8	PTFE	1
3	NUT, BS8	303 SST	1



BS 8 NIPPLE, NUT, & GASKET
AS PER BS341-3-2002
(WITH SILVER PLATED THREADS)
1-1/8" ACROSS FLATS

SALES DRAWING
UNCONTROLLED
FOR
REFERENCE
ONLY

NOTES:

1. DIMENSIONS ARE IN INCHES.
2. NIPPLE, NUT AND GASKET ARE CLEANED FOR OXYGEN SERVICE AND SINGLE POLY BAGGED.
3. ASSEMBLY IS BULK POLY BAGGED AND LABELED WITH GFP LOGO, PART NUMBER, "CLEANED FOR OXYGEN SERVICE", AND "MADE IN THE USA".

REV	CURRENT REVISION	DATE
A	ESTABLISH GFP SALES DRAWING FOR THIS ITEM	03/29/2019

DESCRIPTION: INLET BS8 x 1/4 MNPT 3.50 SS		
PART NUMBER: INL-BS8SS-4M-56F		



THIS DOCUMENT CONTAINS INFORMATION THAT IS THE PROPRIETARY AND CONFIDENTIAL PROPERTY OF GASFLO PRODUCTS INC. AND MAY BE USED ONLY FOR AUTHORIZED PURPOSES. THIS DOCUMENT MAY NOT BE REPRODUCED WITHOUT GASFLO PRODUCTS INC. PRIOR WRITTEN CONSENT.

SIZE: A	SCALE: NTS	MAT'L: SEE B.O.M.
SHEET NUMBER: 1 OF 1		DRAWN BY: fsomma on 02/24/2015

APPR: mbojck on 03/29/2019