

UNCONTROLLED
For Reference Only

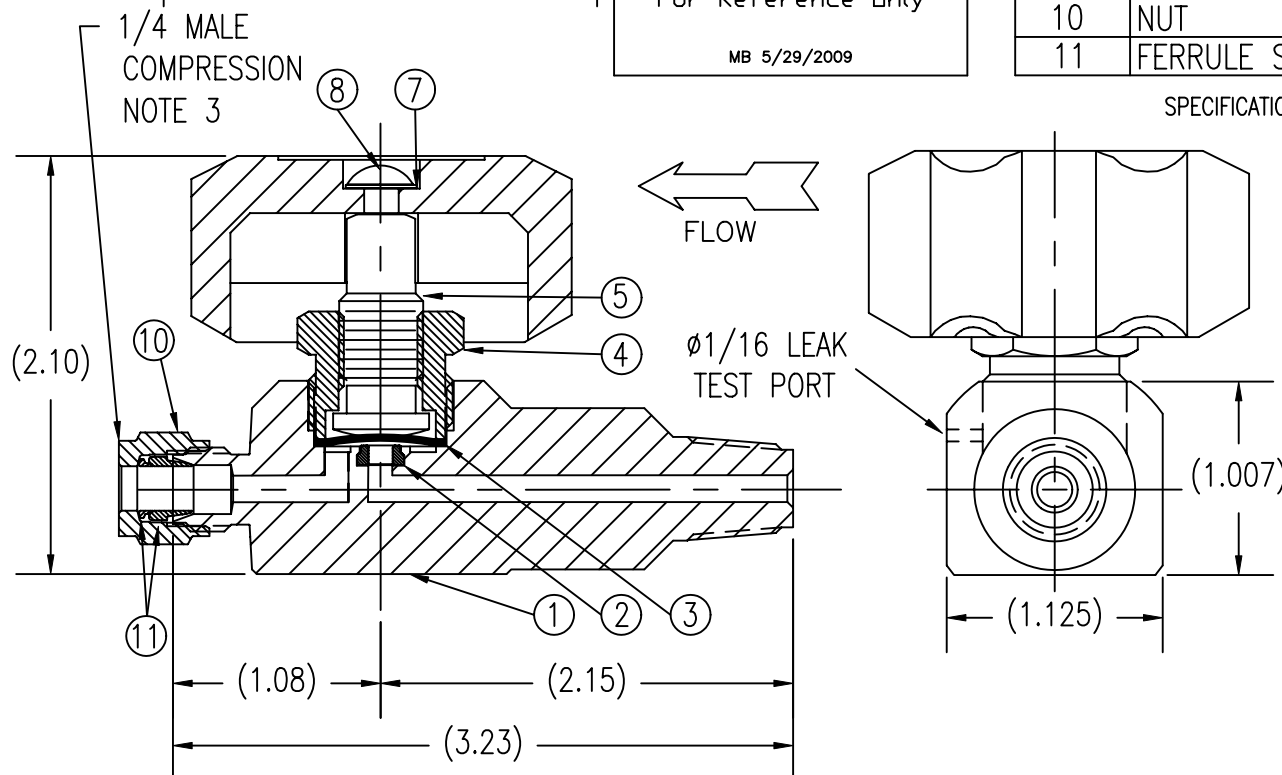
MB 5/29/2009

| ITEM | PART NAME | MATERIAL | QTY. |
|------|-----------------|-------------------|------|
| 1 | BODY | 316L SST | 1 |
| 2 | SEAT INSERT | PCTFE | 1 |
| 3 | DIAPHRAGM ASSY. | CONSISTS OF: | 1 |
| 3A | | COPPER | 2 |
| 3B | | 316L SST | 3 |
| 4 | BONNET | 303 SST | 1 |
| 5 | STEM | 416 SST | 1 |
| 6 | HANDLE | BLACK ABS PLASTIC | 1 |
| 7 | WASHER | 18-8 SST | 1 |
| 8 | SCREW | 18-8 SST | 1 |
| 9 | LABEL | VINYL/MYLAR | 1 |
| 10 | NUT | 316 SST | 1 |
| 11 | FERRULE SET | 316 SST | 1 |

SPECIFICATIONS: PRESSURE RATING: 3500 PSI SEAT ORIFICE SIZE: .125ø
 DESIGN BURST TEST PRESSURE: 14000 PSI
 FLOW COEFFICIENT: CV=.13 SEAT MATERIAL: PCTFE
 TEMPERATURE LIMITS: -65°F TO 150°F
 MAX. ALLOWABLE SEAT LEAKAGE: 2 X 10⁻⁸ ATM CC/SEC He
 MAX. INBOARD LEAKAGE: 2 X 10⁻⁸ ATM CC/SEC He
 WETTED SURFACES: 316L SST, PCTFE
 BURST TEST PRESSURE AS PER TEST 03-01-004: 19000 PSI

NOTES:

1. DIMENSIONS ARE IN INCHES.
2. EACH ASSEMBLY IS HELIUM LEAK TESTED BY PRESSURIZING VALVE IN THE CLOSED POSITION WITH 2000 PSI HELIUM. THE OUTLET IS SNIFFED WITH A MASS SPECTROMETER LEAK DETECTOR, THEN OUTLET OF VALVE IS CAPPED, VALVE OPENED AND WEEP HOLE SNIFFED WITH MASS SPECTROMETER LEAK DETECTOR. ANY DEVIATION FROM BACKGROUND SHALL BE CAUSE FOR REJECTION.
3. MALE NPT END CAPPED. FERRULES, NUTS, HANDLE & LABEL ARE ASSEMBLED TO VALVE. SINGLE POLY BAGGED. BAG LABELED WITH GFP LOGO, PART NUMBER, "ULTRASONICALLY D.I. CLEANED" AND "MADE IN THE USA".



THIS DOCUMENT CONTAINS INFORMATION THAT IS THE PROPRIETARY AND CONFIDENTIAL PROPERTY OF GASFLO PRODUCTS INC. AND MAY BE USED ONLY FOR AUTHORIZED PURPOSES.
 THIS DOCUMENT MAY NOT BE REPRODUCED WITHOUT GASFLO PRODUCTS INC. PRIOR WRITTEN CONSENT.

MAT'L: SEE BOM

DWN: MB

APPVD:

SCALE: NTS

DATE: 5/29/09

GasFlo Products Inc.
Fairfield, N.J.

SALES DWG.- DIA. PACKLESS VALVE
 LONG LEG 1/4M X 1/4C SS316L

DWG: SALES-VLV-LL-44SS-MC