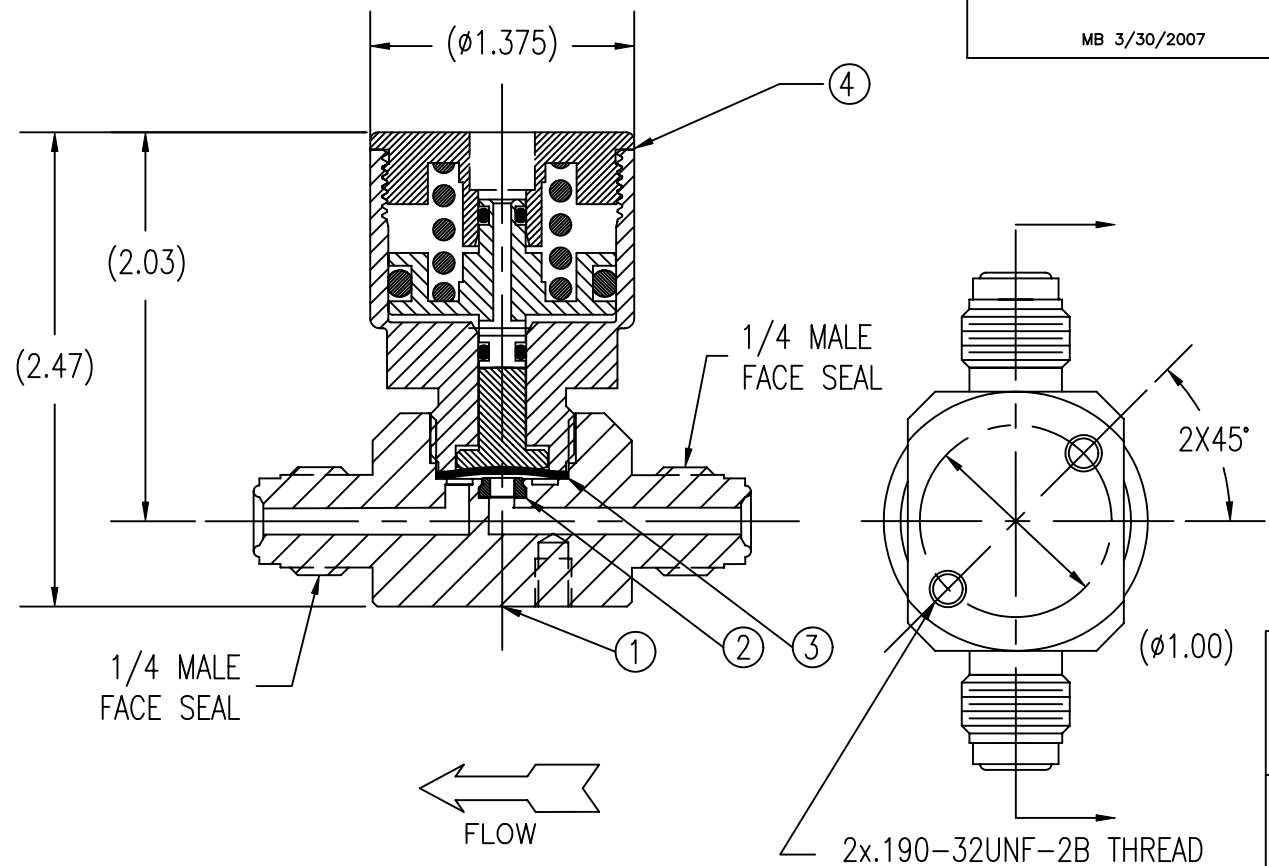


ITEM	PART NAME	MATERIAL	QTY
1	BODY	316L SST	1
2	SEAT INSERT	PCTFE (KEL-F)	1
3	DIAPHRAGM ASSY.	316L SST/COPPER	1
4	ACTUATOR HOUSING	PLATED BRASS	1

UNCONTROLLED SPECIFICATIONS:
 For Reference Only PRESSURE RATING: 150 PSIG MAX.
 VALVE NORMALLY CLOSED
 MB 3/30/2007 ACTUATION PRESSURE: 70 PSIG TO 125 PSIG
 AIR TO OPEN



SEAT ORIFICE SIZE: .125 ϕ
 SEAT MATERIAL: PCTFE
 TEMPERATURE LIMITS:
 -65° F TO 150° F
 MAX. ALLOWABLE SEAT LEAKAGE:
 2 x 10⁻⁸ ATM CC/SEC He
 MAX. INBOARD LEAKAGE:
 2 x 10⁻⁸ ATM CC/SEC He
 WETTED SURFACES: PCTFE, 316L SST

GasFlo Products Inc.
Fairfield, N.J.

SALES DRAWING- 1/4" x 1/4" MALE FACE SEAL
 LOW PRESSURE AIR ACTUATED PACKLESS BARSTOCK VALVE

DWG: SALES-VLV-LPSL-44SS-MFSMFS

THIS DOCUMENT CONTAINS INFORMATION THAT IS THE PROPRIETARY AND CONFIDENTIAL PROPERTY OF GASFLO PRODUCTS INC. AND MAY BE USED ONLY FOR AUTHORIZED PURPOSES. THIS DOCUMENT MAY NOT BE REPRODUCED WITHOUT GASFLO PRODUCTS INC. PRIOR WRITTEN CONSENT.

DWN: MB SCALE: NTS
 APPVD: DATE: 3/18/05