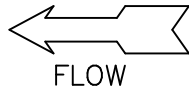


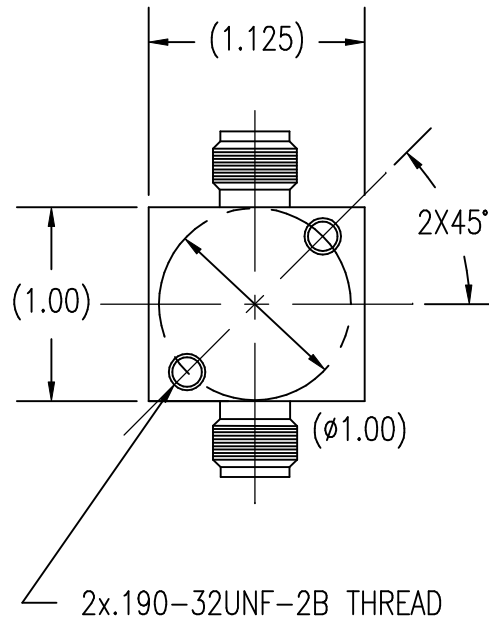
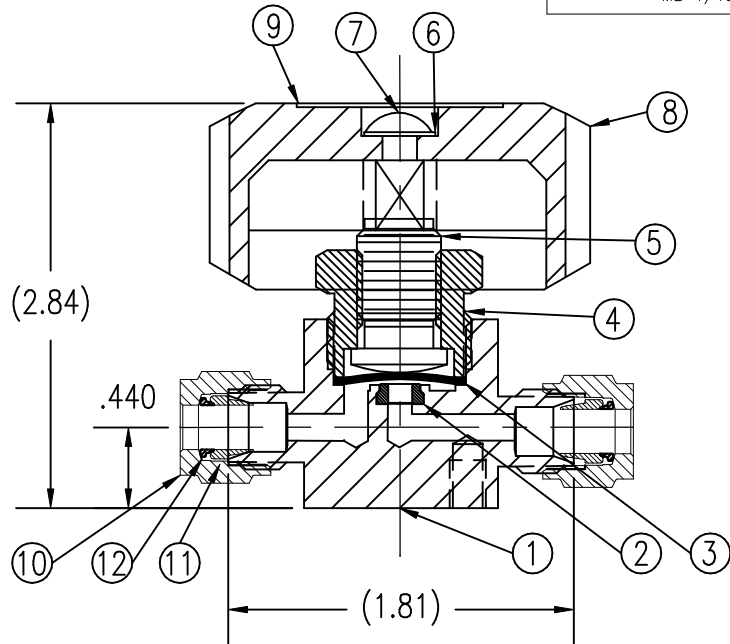
NOTES:

1. SHIP WITH NUTS AND FERRULES HAND-TIGHT.



UNCONTROLLED
For Reference Only

MB 1/18/2007



| ITEM | PART NAME | MATERIAL | QTY |
|------|-----------------|-------------------|-----|
| 1 | BODY | BRASS CDA-360 | 1 |
| 2 | SEAT INSERT | PCTFE (KEL-F) | 1 |
| 3 | DIAPHRAGM ASSY. | 316L SST/COPPER | 1 |
| 4 | BONNET | BRASS CDA-360 | 1 |
| 5 | STEM | 416 SST | 1 |
| 6 | WASHER | 18-8 SST | 1 |
| 7 | SCREW | 18-8 SST | 1 |
| 8 | HANDLE | BLACK ABS PLASTIC | 1 |
| 9 | LABEL | VINYL/MYLAR | 1 |
| 10 | COMPRESSION NUT | BRASS | 2 |
| 11 | FRONT FERRULE | BRASS | 2 |
| 12 | REAR FERRULE | BRASS | 2 |

SPECIFICATIONS:

PRESSURE RATING: 3500 PSI

FLOW COEFFICIENT $C_v = .13$

SEAT ORIFICE SIZE: $.125 \phi$

SEAT MATERIAL: PCTFE

TEMPERATURE LIMITS:

-65° F TO 150° F

MAX. ALLOWABLE SEAT LEAKAGE:

2 x 10⁻⁸ ATM CC/SEC He

MAX. INBOARD LEAKAGE:

2 x 10⁻⁸ ATM CC/SEC He

WETTED SURFACES: PCTFE, 316L SST, BRASS

GasFlo Products Inc.

Fairfield, N.J.

SALES DRAWING- 1/4" x 1/4" COMPRESSION

MULTI TURN PACKLESS BARSTOCK VALVE

THIS DOCUMENT CONTAINS INFORMATION THAT IS THE PROPRIETARY AND CONFIDENTIAL PROPERTY OF GASFLO PRODUCTS INC. AND MAY BE USED ONLY FOR AUTHORIZED PURPOSES. THIS DOCUMENT MAY NOT BE REPRODUCED WITHOUT GASFLO PRODUCTS INC. PRIOR WRITTEN CONSENT.

DWN MB
APPVD

SCALE: 1:1

DATE 11/11/02

DWG SALES-VLV-SL-44BR-CC