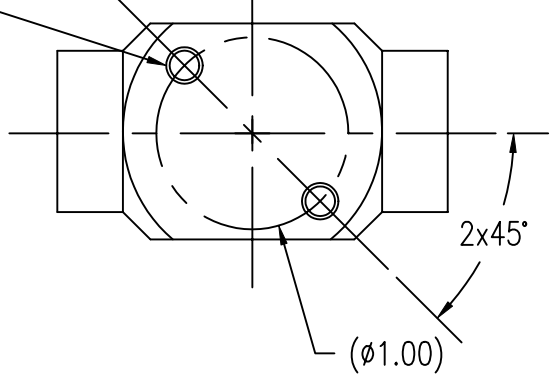
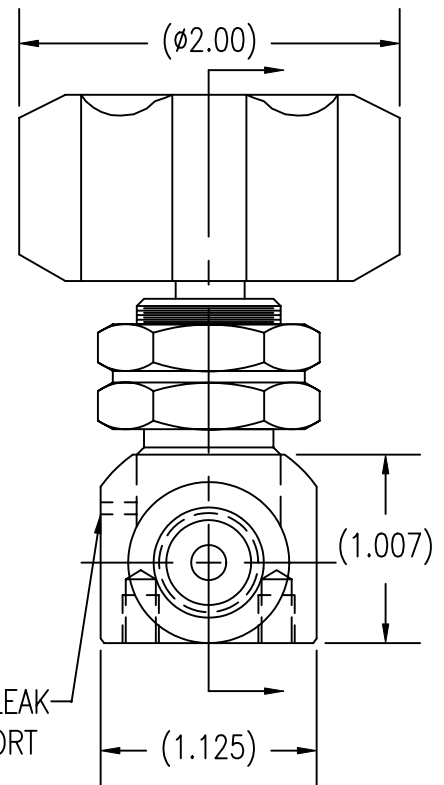
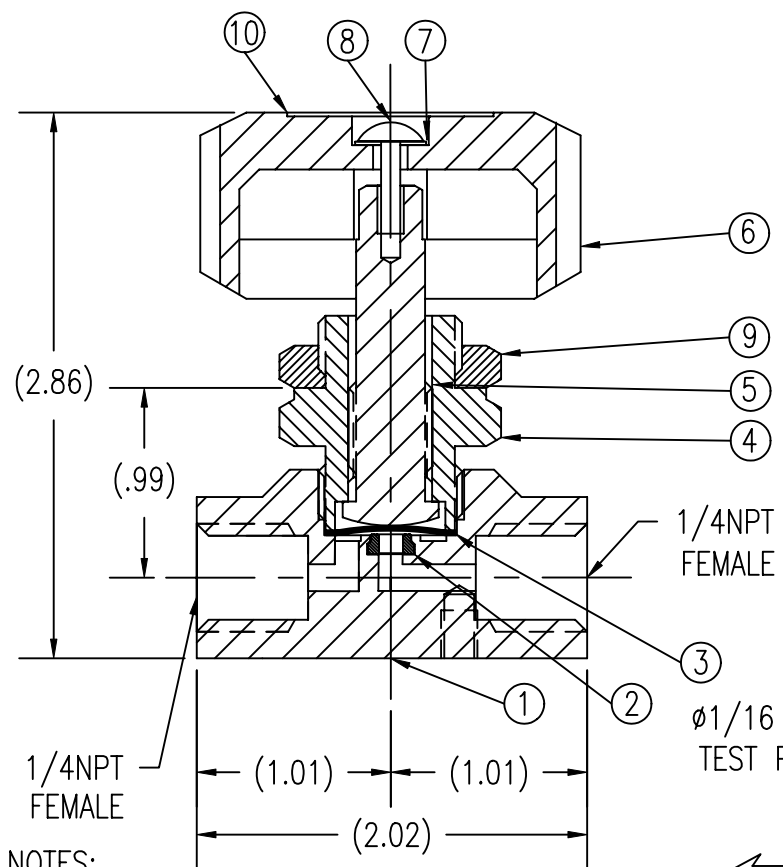


2x#10-32 REAR PANEL MOUNTING HOLES .29 DEEP



UNCONTROLLED
For Reference Only
MB 10/15/2009

ITEM	PART NAME	MATERIAL	QTY
1	BODY	BRASS CDA-360	1
2	SEAT INSERT	PCTFE	1
3	DIAPHRAGM ASSY.	316L SST/COPPER	1
4	BONNET	316L SST	1
5	STEM	416 SST	1
6	HANDLE	BLACK ABS PLASTIC	1
7	WASHER	18-8 SST	1
8	SCREW	18-8 SST	1
9	PANEL NUT	PLATED BRASS	1
10	LABEL	VINYL/MYLAR	1



SPECIFICATIONS:
 PRESSURE RATING: 3500 PSI
 FLOW COEFFICIENT $C_v = .13$
 SEAT ORIFICE SIZE: $.125 \phi$
 SEAT MATERIAL: PCTFE
 TEMPERATURE LIMITS:
 -65° F TO 150° F
 MAX. ALLOWABLE SEAT LEAKAGE:
 2 x 10-8 ATM CC/SEC He
 MAX. INBOARD LEAKAGE:
 2 x 10-8 ATM CC/SEC He
 WETTED SURFACES: 316L SST,
 BRASS CDA-360, PCTFE.

NOTES:
 1. DIMENSIONS ARE IN INCHES.

GasFlo Products Inc.
Fairfield, N.J.

SALES DRAWING- PANEL MOUNT PACKLESS VALVE
 BRASS BODY- 1/4 FNPT x 1/4 FNPT

THIS DOCUMENT CONTAINS INFORMATION THAT IS THE PROPRIETARY AND CONFIDENTIAL PROPERTY OF GASFLO PRODUCTS INC. AND MAY BE USED ONLY FOR AUTHORIZED PURPOSES. THIS DOCUMENT MAY NOT BE REPRODUCED WITHOUT GASFLO PRODUCTS INC. PRIOR WRITTEN CONSENT.

DWN: MB
 APPVD:
 SCALE: 1:1
 DATE: 2/1/02

DWG: SALES-VLV-SL-44BR-FF-PM