

ITEM	PART NAME	MATERIAL	QTY
1	BODY	BRASS CDA-360	1
2	SEAT INSERT	PCTFE	1
3	DIAPHRAGM ASSY.	316L SST/COPPER	1
4	BONNET	BRASS CDA-360	1
5	STEM	416 SST	1
6	HANDLE	BLACK ABS PLASTIC	1
7	WASHER	18-8 SST	1
8	SCREW	18-8 SST	1
9	LABEL	VINYL/MYLAR	1

SPECIFICATIONS:

PRESSURE RATING: 3500 PSI

FLOW COEFFICIENT $C_v = .13$

SEAT ORIFICE SIZE: .125 ϕ

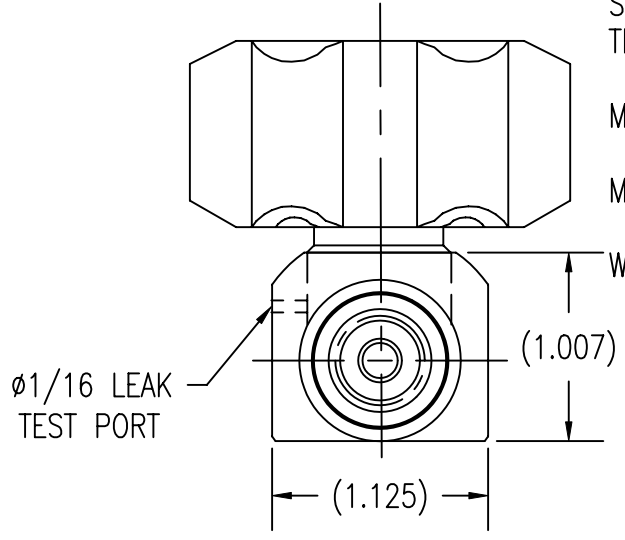
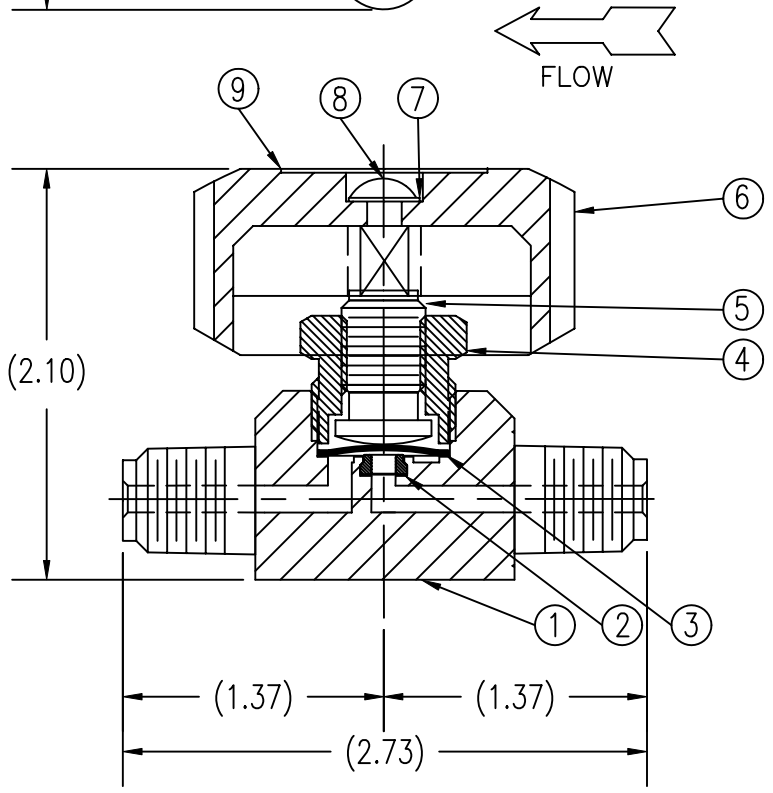
SEAT MATERIAL: PCTFE

TEMPERATURE LIMITS:
-65° F TO 150° F

MAX. ALLOWABLE SEAT LEAKAGE:
2 x 10⁻⁸ ATM CC/SEC He

MAX. INBOARD LEAKAGE:
2 x 10⁻⁸ ATM CC/SEC He

WETTED SURFACES: BRASS CDA-360,
316L SST, PCTFE.



NOTES:
1. DIMENSIONS ARE IN INCHES.

GasFlo Products Inc.
Fairfield, N.J.

SALES DRAWING- 1/4" x 1/4" MNPT
PACKLESS BARSTOCK VALVE