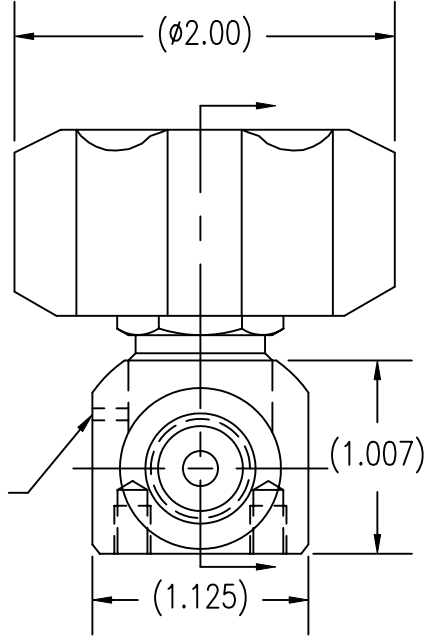
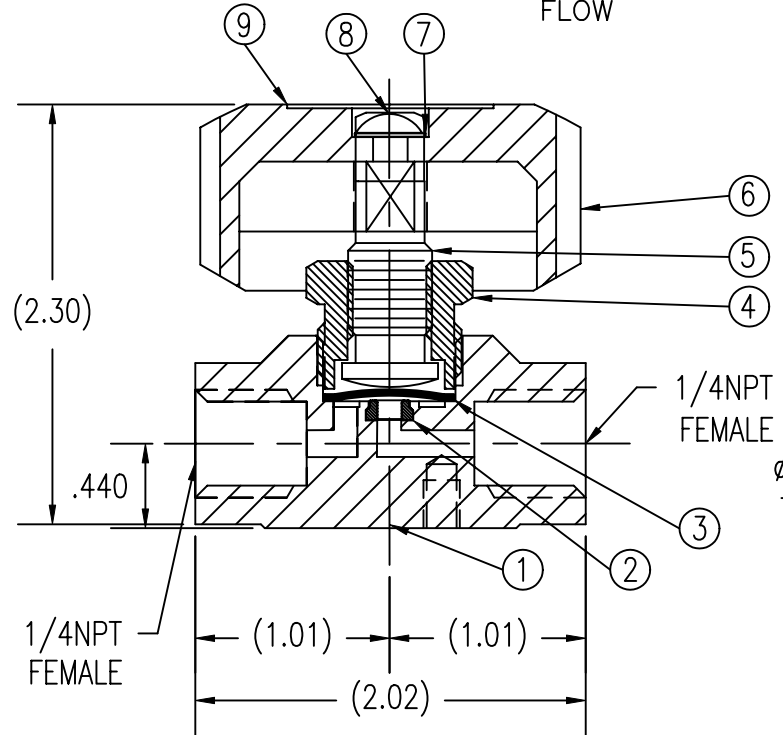


ITEM	PART NAME	MATERIAL	QTY
1	BODY	PLATED BRASS CDA-360	1
2	SEAT INSERT	PCTFE	1
3	DIAPHRAGM ASSY.	316L SST/COPPER	1
4	BONNET	PLATED BRASS CDA-360	1
5	STEM	416 SST	1
6	HANDLE	BLACK ABS PLASTIC	1
7	WASHER	18-8 SST	1
8	SCREW	18-8 SST	1
9	LABEL	VINYL/MYLAR	1



SPECIFICATIONS:

PRESSURE RATING: 3500 PSI

FLOW COEFFICIENT $C_v = .13$

SEAT ORIFICE SIZE: $.125 \phi$

SEAT MATERIAL: PCTFE

TEMPERATURE LIMITS:
-65° F TO 150° F

MAX. ALLOWABLE SEAT LEAKAGE:
2 x 10-8 ATM CC/SEC He

MAX. INBOARD LEAKAGE:
2 x 10-8 ATM CC/SEC He

WETTED SURFACES: BRASS CDA-360,
316L SST, PCTFE

UNCONTROLLED
For Reference Only

MB 3/30/2007

NOTES:
1. DIMENSIONS ARE IN INCHES.

LETTER	REVISIONS	DATE
A	REVISED AND REDRAWN	3/15/2004

GasFlo Products Inc.
Fairfield, N.J.

SALES DRAWING- 1/4" x 1/4" FNPT
PLATED BRASS PACKLESS BARSTOCK VALVE

DWG SALES-VLV-SL-44CH-FF REV. A

THIS DOCUMENT CONTAINS INFORMATION THAT IS THE PROPRIETARY AND CONFIDENTIAL PROPERTY OF GASFLO PRODUCTS INC. AND MAY BE USED ONLY FOR AUTHORIZED PURPOSES. THIS DOCUMENT MAY NOT BE REPRODUCED WITHOUT GASFLO PRODUCTS INC. PRIOR WRITTEN CONSENT.

DWN MB
APPVD

SCALE: NTS
DATE 3/15/04