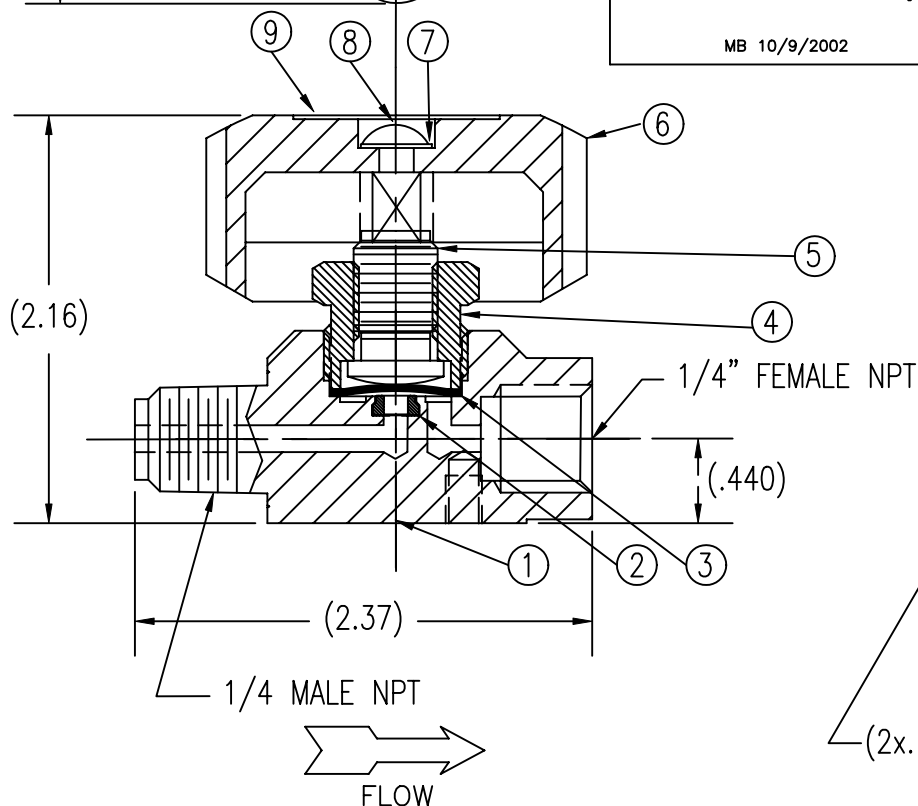
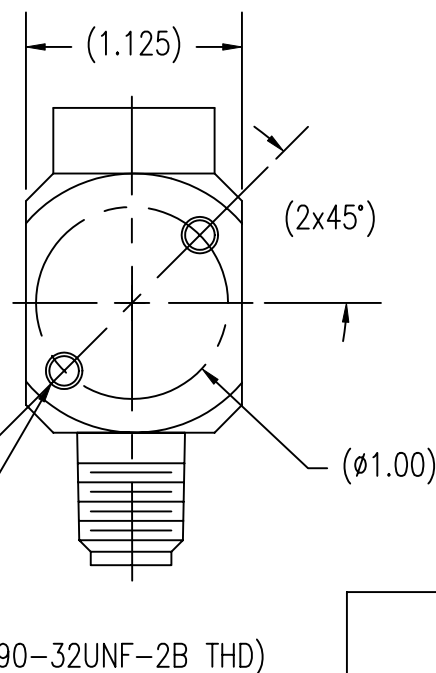


UNCONTROLLED  
For Reference Only

MB 10/9/2002



ITEM	PART NAME	MATERIAL	QTY
1	BODY	316L SST	1
2	SEAT INSERT	PCTFE	1
3	DIAPHRAGM ASSY.	316L SST/COPPER	1
4	BONNET	303 SST	1
5	STEM	416 SST	1
6	HANDLE	BLACK ABS PLASTIC	1
7	WASHER	18-8 SST	1
8	SCREW	18-8 SST	1
9	LABEL	VINYL/MYLAR	1



SPECIFICATIONS:  
 PRESSURE RATING: 3500 PSI  
 FLOW COEFFICIENT  $C_v = .13$   
 SEAT ORIFICE SIZE: .125  $\phi$   
 SEAT MATERIAL: PCTFE  
 TEMPERATURE LIMITS:  
 -65° F TO 150° F  
 MAX. ALLOWABLE SEAT LEAKAGE:  
 2 x 10<sup>-8</sup> ATM CC/SEC He  
 MAX. INBOARD LEAKAGE:  
 2 x 10<sup>-8</sup> ATM CC/SEC He  
 WETTED SURFACES: PCTFE, 316L SST

*GasFlo Products Inc.*  
*Fairfield, N.J.*

SALES DRAWING - 1/4M X 1/4F  
 DIAPHRAGM PKLS BARSTOCK VALVE

THIS DOCUMENT CONTAINS INFORMATION THAT IS THE PROPRIETARY AND CONFIDENTIAL PROPERTY OF GASFLO PRODUCTS INC. AND MAY BE USED ONLY FOR AUTHORIZED PURPOSES.  
 THIS DOCUMENT MAY NOT BE REPRODUCED WITHOUT GASFLO PRODUCTS INC. PRIOR WRITTEN CONSENT.

MAT'L: SEE BOM

DWN: MB

SCALE: NTS

APPVD:

DATE: 10/9/02

DWG: SALES-VLV-SL-44SS-MF